

Seasonal

NEWS.



2021

 Collection

CrisMa[®]

Ferraghini[®]

MARK[®]
TWAIN



CHRISTMAS	4-15	
WRITING	16-33	
GADGETS, OFFICE & TIME	34-59	
BAGS & TRAVEL	60-75	
HOME & DRINKWARE	76-107	
WELLNESS & GAMES	108-113	
UMBRELLAS	114-121	
TOOLS & MORE	122-134	

CrisMa®

*The M-Collection Premium
trade mark, all rights reserved*

Ferraghini®

*The brand for luxurious
and exclusive items*

**MARK
TWAIN®**

*Own brand for writing instruments
and office supplies.*



*The ink of our CrisMa ballpen refills
is certified by the German toxic
substances and control act (TSCA).*



Art. 9999300 UM 3
Super heavy duty battery



Art. 9999400 UM 4
Super heavy duty battery



87888v
Single box for item 87888
12,5 × 8,5 × 11

General information

The prices stated in the catalogue do not include VAT or any other tax.

The product pictures are not to be considered part of our sales contracts.

We reserve the right of minor changes on products, packaging, sizes and colors of the products without prior notification.

The displayed prices are for indication only, cannot be considered as sales offers. We reserve the right to implement price changes without prior notice.



Certificated and sustainable supply chain



Social Compliance and Responsibility sits at the heart of our values.

For many years, we have set the standard in responsible sourcing and we are proud to be accredited by several organizations.



Eco-friendly Packaging

Our packaging boxes are made of recycled paper and are easily disposable in paper tins as they are not foiled or laminated.



New plastic free packaging



We are continually restless in the areas of Environmental Responsibilities.

We are also optimistic that our sustainability strategy will help to build deeper customer connections with the help of promotional products and create positive environmental change in the same time.

In order to achieve the above goals we present more Eco items than ever before.

We created a new way of PLASTIC FREE packaging.





FOOD SAFE 500 ml VACUUM 24h+ 36h+

92596

Gift set large

Gift set with a red fleece blanket (180 x 120cm), a metal vacuum flask (500ml) and a packet of finest Earl Grey tea (15 tea bags). We print your logo on the lid of the gift box.

30 x 30 x 13,2 cm | S1 15 x 15 | N



ECO

FOOD SAFE 400 ml + 200 ml

92597

Gift set large

Gift set with an RPET fleece blanket (120 x 150cm), a porcelain cup and pot set and a packet of finest Earl Grey tea (15 tea bags). We print your logo on the lid of the gift box.

30 x 30 x 13,2 cm | S1 15 x 15 |





92603

Gift set small

Gift set for Christmas consisting of a mug with star print, felt coasters and a packet of finest Earl Grey tea (15 tea bags). We print your logo on the lid of the gift box.

21 x 21 x 11,2 cm | S1 10 x 10 |



FOOD SAFE **500 ml** **ECO** **EXPRESS**

92605

Gift set small

Gift set consisting of a double-walled glass cup (350ml) with bamboo lid, a tea bag holder and a packet of finest Earl Grey tea (15 tea bags). We print your logo on the lid of the gift box.

21 x 21 x 11,2 cm | S1 10 x 10 |





10620

Pencils with different heads

Wooden pencil with various rubber heads and colours. We will print your advertising on the shaft.

✂ 19,3 x Ø 0,7 cm | ☒ T1 4 x 0,5 | ☐ P

20874

Christmas notebook

DIN A6 Christmas-themed notebook with PU cover, bookmark, and 190 blank pages. We will print your logo on the front.

✂ 9 x 14 x 1,6 cm | ☒ S1 4 x 1 | ☐ P



51188

Cardboard house for coloring

Cardboard house for coloring, with opening door in environmentally friendly packaging, quick and easy construction. Scissors, stains and glue are not included. Your advertisement will be printed on the packaging.

✂ 16 x 16 x 18 cm | ☒ ETN1 4 x 3 | ☐ K

28279

Highlighter manikin with keypad brush

Highlighter manikin with 4 coloured highlighters, a polishing fleece on the back, and an extendable keypad brush. We will print your logo on the body.

✂ 9,4 x 10,2 x 1,7 cm | ☒ T3 3 x 3 | ☐ P





FOOD SAFE 300 ml

82536

Set of 2 Christmas mugs

Set of two ceramic mugs with a Christmas motif and a capacity of 300 ml each. The sophisticated packaging looks good and is environmentally friendly. Your advertising will be attached to the packaging by means of a label.

18,7 × 8,6 × 11,2 cm | ETN1 4 × 4 | K



FOOD SAFE 300 ml

82539

Christmas mug

Classic ceramic mug with a Christmas motif and a capacity of 300 ml. Individually packed in a cardboard box made of recycled paper. Your advertising will be removed from the box by means of a label.

8,5 × 8,3 cm | ETN1 4 × 4 | K



FOOD SAFE EXPRESS

80187

Elk shaped nutcracker

Aluminium elk-shaped nutcracker, with lever mechanism. Your logo will be laser engraved.

18 × 4,8 × 15,5 cm | L2 5 × 1 | K





FOOD SAFE

80554

Chocolate fondue set

Chocolate fondue set made of porcelain, including 2 fondue forks. Dip fruits or biscuits into the chocolate and enjoy this beautiful gift set. Your advertising will be printed on a label and stuck on the single box.

✂️ ø 11,3 × 13,8 cm | 📦 ETN1 5 × 5 | 🌳 K



FOOD SAFE 📏 300 ml

80556

Cup with crown print

Cup made of porcelain with a crown print and a filling capacity of 300ml. We print your advertising on a label and place it on the gift box.

✂️ ø 8,5 × 10,3 cm | 📦 ETN1 5 × 5 | 🌳 K



FOOD SAFE 📏 300 ml

80584

Cup with star print

Cup of porcelain with a star print and a filling capacity of 300ml. Your advertising will be printed on a label and stuck to the gift box.

✂️ ø 8 × 10,5 cm | 📦 ETN1 5 × 5 | 🌳 K





FOOD SAFE 400 ml + 200 ml

88854

Teapot with cup and coaster

2-in-1 tea set with a tea cup (200ml), teapot (400ml) and saucer made of high-quality porcelain for the best tea enjoyment. We will print your logo with ceramic transfer.

15,8 x 15 x 15,2 cm | C1 5 x 3 | K



FOOD SAFE 400 ml + 200 ml

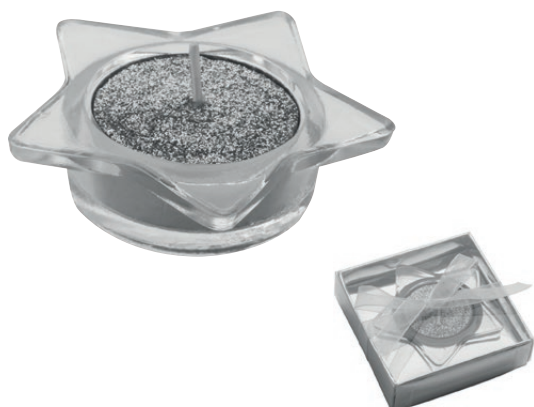
80615

Set of cups made of porcelain

Tea set with a teacup (200ml) and pot (400ml) of high quality porcelain with printed stars. We will print your logo on a label and add it to the box.

16,5 x 9,5 x 12 cm | ETN1 5 x 5 | K



**80188****X-mas candle set**

Christmas candle set of a sparkling candle and a holder, already pre-packed as a gift.

❏ 8 x 8 x 2,5 cm | 田 ETN1 4 x 2 | 田 K

**80170****Plastic Christmas tree ball decoration - supplied in a gift box.**

Plastic Christmas tree decorative ball in a x-mas gift box. An eye-catcher on every christmas tree. We will print your logo on a label on the box.

❏ 7,7 x 7,7 x 10 cm | 田 ETN1 4 x 2 | 田 K



M1

M2

91187**Solar wiggle figure**

Wiggle figure with integrated solar cell. When the solar field is exposed to the sun or light, the figure begins to wobble. Your advertisement will be printed on the base.

❏ 5,1 x 6 x 10,9 cm | 田 T3 3 x 0,7 | 田 K

**80585****Night light in the shape of a star**

Color changing LED night light in star shape. Decorative in every bedroom or children's room. Your advertising will be printed on the light.

❏ 8 x 5 x 7,5 cm | 田 T3 3 x 1 | 田 K



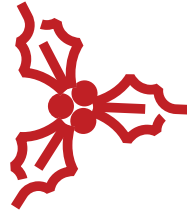


60869

Christmas blanket

Cuddly Christmas blanket with reindeer motif packed in a polybag. Cold evenings before Christmas are now in the past! We will print your logo on a label on the polybag.

❏ 31 x 30 x 7,5 cm | 田 ETN1 4 x 2 | 田 P



70328

X-mas pillow with different designs

Plush Christmas pillow with different designs.

❏ 30 x 30 x 9 cm | 田 ETN1 4 x 2 | 田 P



73269

Xmas slippers

4 pair of slippers in 3 different sizes, stored in a large Christmassy slipper, which can be hung on the wall. We will print your logo on the storing slipper.

❏ 26,5 x 11 x 51 cm | 田 TT3 10 x 5 | 田 P



80538

X-mas hot water bottle

Rubber hot water bottle with a wool-knitted Christmas cover/sleeve. Filling capacity 500ml. We will print your logo on the back.

❏ 15 x 26 x 5 cm | 田 TT3 10 x 10 | 田 N





80621

Advent calendar

Advent Calendar "Tools". The calendar includes a tool for each day of Advent (includes 2 pliers, bits, screwdrivers in diverse sizes and pointed tweezers). Your advertising will be printed on the bottom corner of the calendar.

✂ 42,5 × 4,5 × 30,5 cm | ☒ S1 11 × 8 | 田 K

71189

Microfibre towels in a metal box

4 microfibre towels in a Christmas metal box. We will laser engrave your logo on the box.

✂ 10,7 × 10,7 × 10,5 cm | ☒ L2 5 × 3 | 田 N



93359

Star set made of felt

Star set made of felt, containing 4 large, 4 middle-sized and 74 small decorative felt pads, for a perfectly decorated table. We will place your advertising on a label on the packaging.

✂ 30 × 30 cm | ☒ ETN1 5 × 5 | 田 P

88527

Adhesive ribbon in dispenser

Adhesive ribbon band dispenser with Xmas theme. Embellish your presents with this Christmassy ribbon. Thanks to the unrolling function and the knife at the end of the dispenser wrapping presents is a child's play.

✂ 5,5 × 10 × 6,5 cm | ☒ ETN1 3 × 2 | 田 N

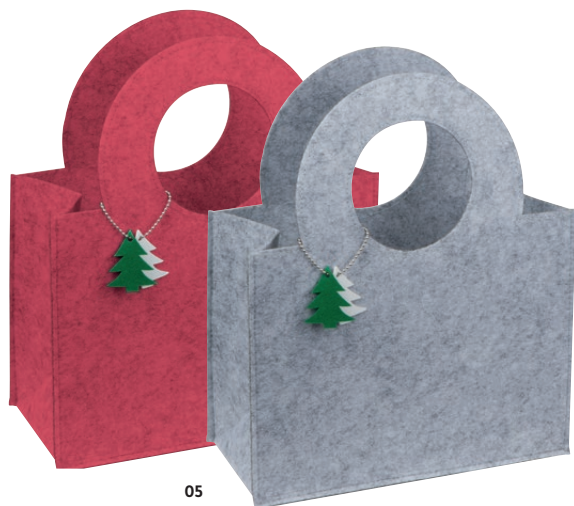
30035

Stick on X-Mas icons

Stick on X-Mas icons.

✂ 2,5 × 0,8 × 3,8 cm | ☒ o - | 田 P





05

07

68988

Felt bag with fir tree pendant

Felt bag with Christmassy tree pendants, which is also a great packaging for other presents. We will print your logo on the bag.

✂ 27 × 13 × 21 cm | ☒ TT2 4 × 6 | ☐ P



60873

Gymbag with Christmas design

Non-woven gymbag with Santa Claus print. We will print your logo on the free area of the bag.

✂ 37 × 0,3 × 40 cm | ☒ S1 19 × 19 | ☐ N



80569

Small Christmas paper bag

Christmas gift bag made of paper with snowflake design and two handles. We will print your advertising on a label.

✂ 18 × 8 × 23 cm | ☒ ETN1 5 × 5 | ☐ N

80570

Big Christmas paper bag

Large Christmas gift bag made of paper with snowflake design and two handles. We will print your advertising on a label.

✂ 25,9 × 12 × 32 cm | ☒ ETN1 5 × 5 | ☐ N





03

06



FOOD SAFE 460 ml

81461

PS Drinking glass 460 ml

Plastic drinking glass in the shape of a goblet, with a 460 ml filling capacity. Your advertisement will be printed on the glass.

Ø 8,5 x 22 cm | T4 4 x 3 | K



11

98

FOOD SAFE 460 ml

82479

Drinking Goblet

Drinking goblet in with shiny surface and a capacity of 460 ml made from plastic. Your Logo will be engraved on the surface.

Ø 8,5 x 22 cm | L3 4,5 x 4,5 | K



MA

FE

83531

Gift bag man/woman - size for a wine bottle

The perfect gift bag for wine bottles. Thanks to the different prints, you'll always find the right one for anyone. We will add a full colour label onto the bag for your advertising.

12 x 9 x 35 cm | ETN1 5 x 3 | N



MA

FE

83532

Gift bag man/woman with a crystal

Gift bag with man/woman print with a build in crystal. You'll always impress the right person with this bag. We will add a full colour label onto the bag for your advertising.

18 x 9 x 22,8 cm | ETN1 5 x 4 | N





61817

Big recycled paperbag with 2 handles

Spacious ecofriendly, reuseable paper bag (recycled - 120g/m²) with bottom fold, 2 strong handles and coloured front and rear. This nice bag is also perfectly reusable. Your Logo will be printed onto the front side.

✂ 37,8 x 15 x 40,2 cm | ☒ TT2 20 x 15 |



61818

Small recycled paperbag with 2 handles

Small ecofriendly, reuseable paper bag (recycled - 120g/m²) with bottom fold and 2 strong handles and coloured front and rear. This nice bag is also perfectly reusable. Your logo will be printed onto the front side.

✂ 21 x 14 x 19 cm | ☒ TT1 14 x 8 |



61387

Non woven bag - large

Large non woven bag with handles, reinforced with a cross seam. Your advertisement will be printed on one side.

✂ 34,5 x 15,5 x 40 cm | ☒ S1 20 x 20 | ☐ N

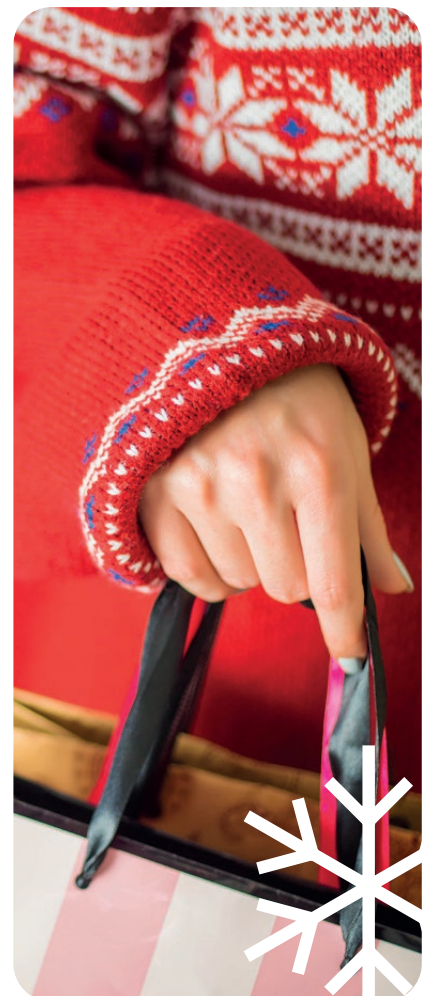


61388

Non woven bag - small

Small non woven bag with handles, reinforced with a cross seam. Your advertisement will be printed on one side.

✂ 30 x 12,2 x 39,7 cm | ☒ S1 20 x 15 | ☐ N





MARK
TWAIN ⚡ EXPRESS

10759

Mark Twain writing set with ball pen and rollerball pen

High-quality metal writing set, with 1 blue-writing ball pen and 1 rollerball in acrylic packaging *. We will engrave your logo to the right of the clip. Laser costs are for both pens.

✂ 17,8 × 5,4 × 3 cm | 📏 L4 4 × 0,6 | 🌳 K



Ferraghini® ⚡ EXPRESS

F193

Ferraghini writing set with a ball pen and a rollerball pen

Classically elegant Ferraghini writing set consisting of a ball pen with twist mechanism and a rollerball pen (both blue-writing) in a black folding box*.

✂ 19,3 × 7,4 × 3,2 cm | 📏 L4 3 × 0,7 | 🌳 K



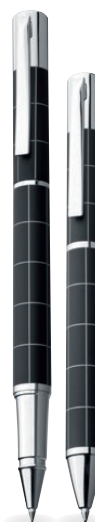
MARK
TWAIN ⚡ EXPRESS

17704

Mark Twain writing set, fountain pen and ball pen white

Mark Twain writing set, consisting of a fountain pen and a metal ball pen with twist mechanism and a large blue-writing refill in a fresh white design. The set comes in a black box* and includes a black push case*. We will engrave your logo onto the pens.

✂ 17 × 11,8 × 2 cm | 📏 L4 2,5 × 0,6 | 🌳 K



Ferraghini® ⚡ EXPRESS

F124

Ferraghini metal writing set

The art of writing - elegant metal writing set, includes a black-writing ball pen, and a blue-writing rollerball in a wonderful case. We will engrave your logo on the clips of the pens.

✂ 16 × 6 × 2,3 cm | 📏 L4 2 × 0,3 | 🌳 K





MARK
TWAIN ⚡ EXPRESS

13392

Mark Twain writing set

Mark Twain writing set in a black case, with a blue-writing ball-pen with twist mechanism, and a fountain pen with rubberized shaft. We will engrave your advertising on the clip - engraving price is per writing utensil.

✂ 19,5 × 7,8 × 3,7 cm | 📏 L4 3,5 × 0,6 | 🌳 K



MARK
TWAIN ⚡ EXPRESS

13463

Mark Twain writing set

Mark Twain - 3-piece metal writing set consisting of a fountain pen including refillable cartridge, a ball pen with black-writing large metal refill, and a blue-writing rollerball, it comes in a nice box with white seams. We will laser engrave your logo onto the pens.

✂ 18,2 × 8,3 × 4,8 cm | 📏 L5 4 × 0,6 | 🌳 K



MARK
TWAIN ⚡ EXPRESS

13034

Ball pen Mark Twain

High-quality Mark Twain copper ball pen with twist mechanism and large blue-writing refill that makes a difference. The case matches the ball pen in colour and captivates with its black-lacquered design. We will print your logo on the box.

✂ 14,6 × Ø 1,1 cm | 📏 L2 3,5 × 0,3 | 🌳 K



MARK
TWAIN ⚡ EXPRESS

17841

Mark Twain ball pen in carbon design

Mark Twain ball pen with twist mechanism, in a silver carbon design with a large blue metal refill and a perfectly matching pen case*. We will engrave your logo to the right of the clip.

✂ 14,7 × Ø 1,3 cm | 📏 L2 4 × 0,6 | 🌳 K





MARK
TWAIN ⚡ EXPRESS

10612

Mark Twain ballpen

Mark Twain metal ballpen with dark chromed applications and large blue-writing refill. Delivered in a noble case. We will engrave your logo next to the clip.

✂ 14,4 x ø 1,1 cm | ☒ L2 3,5 x 0,6 | 田 K



MARK
TWAIN ⚡ EXPRESS

10576

Mark Twain ballpen

Mark Twain metal ballpen with dark chrome-plated applications, rubberfinish and a large blue-writing refill. Delivered in a noble case. We will engrave your advertising next to the clip.

✂ 14,5 x ø 1,2 cm | ☒ L2 3,5 x 0,7 | 田 K



MARK
TWAIN ⚡ EXPRESS

13383

Mark Twain ball pen acrylic box

High-quality Mark Twain metal ball pen with twist mechanism. It captivates with its plain elegance and its appealing acrylic box*. We will engrave your advertising to the right of the clip.

✂ 13,8 x ø 1,2 cm | ☒ L2 3,5 x 0,6 | 田 K



MARK
TWAIN ⚡ EXPRESS

10760

Rollerball

High-quality rollerball pen in acrylic packaging. We will engrave your logo to the right of the clip.

✂ 17,8 x 5,4 x 3 cm | ☒ L2 4 x 0,6 | 田 K





⚡ EXPRESS

10611

Ballpen with silver top

Elegant metal ballpen with silver top and large blue-writing refill. The ballpen comes in a cardboard gift box *. Your advertising will be engraved next to the clip.

✂ 14,4 x ø 1,1 cm | ☒ L2 3,5 x 0,7 | ☐ K



⚡ EXPRESS

13544

Metal pen set

Metal pen set with a blue writing ball pen and a pencil, nicely packed in a carbon optic box. We will laser engrave your logo onto the pens.

✂ 16,5 x 4,7 x 2,5 cm | ☒ L4 4 x 0,7 | ☐ P



⚡ EXPRESS

18510

Metal ball pen with touch pad function

Rotary ball pen made of metal in classical design with blue-writing large refill and touch feature for smartphones or tablet PCs. We will engrave your logo below the clip.

✂ 14,9 x ø 1,4 cm | ☒ L1 3,5 x 0,6 | ☐ P



⚡ EXPRESS

10182

Metal twist ballpen with rubberized shaft

Metal twist ballpen with rubberized barrel and blue writing refill. Your logo will be engraved to the right of the clip.

✂ 14 x ø 1,2 cm | ☒ L1 4 x 0,6 | ☐ KS



⚡ EXPRESS

17481

Metal ball pen in a box

Exclusive metal ball pen with twist mechanism, blue-writing large metal refill and a black metal box*. We will engrave your logo next to the clip.

✂ 14 x ø 1,2 cm | ☒ L2 3,5 x 0,7 | ☐ K





MARK
TWIN ECO EXPRESS

12532

Mark Twain writing set

High-quality Mark Twain writing set consisting of a blue twist ballpoint pen with a large refill and a metal rollerball with a wooden body. The set is packed in a natural wooden box. Your advertising will be lasered to the right of the clip, the price for the engraving is for both writing instruments.

✂ 17 x 5,1 x 2,4 cm | ☒ L4 5 x 3 | ☒ K



MARK
TWIN ECO EXPRESS

12581

Writing set (brass and wood)

Mini writing set consisting of a fountain pen and a rollerball made of wood and brass, the capsules can be screwed onto the back of the writing instruments as an extension. The set is delivered in an environmentally friendly cardboard box. Your advertising will be engraved on both writing instruments (en-graving price for both writing instruments).

✂ 10,7 x 6 x 2,5 cm | ☒ L4 3,5 x 0,6 | ☒ KS



MARK
TWIN ECO EXPRESS

10898

Mark Twain writing set

Mark Twain writing set, includes one ballpen with large blue writing refill and one fountain pen made of metal with wood-en barrel. The set is delivered in a black box and also includes a case. We will engrave your logo to the right of the clip (on both pens.)

✂ 17 x 11,6 x 1,9 cm | ☒ L4 3,5 x 0,6 | ☒ K





ECO ⚡ EXPRESS

18441

Desk set

Wooden desk set with a blue-writing ball pen with metal system refill, a fountain pen including a blue cartridge, and a letter opener in a wooden case*. We will print your logo on the case.

✂ 17 × 7,5 × 2,3 cm | ☒ L3 5 × 3 | ☐ K



ECO ⚡ EXPRESS

14016

Rosewood pen set in stylish case.

Wooden writing set consisting of a blue-writing ball pen with metal system refill and a fountain pen including a blue cartridge in a wooden box* with ball pen stand. We will print your logo on the box.

✂ 17 × 5,4 × 2,4 cm | ☒ L3 5 × 3 | ☐ K



ECO ⚡ EXPRESS

14015

Rosewood pen set in case

Wooden writing set consisting of a blue-writing ball pen with metal system refill and a fountain pen including a blue cartridge in a wooden box* with brass finish and ball pen stand.

✂ 17 × 5,5 × 2,4 cm | ☒ L3 5 × 3 | ☐ K





ECO EXPRESS

11366

Cork ballpen

High-quality cork ballpen with blue writing refill. Your logo will be branded to the right of the clip.

14,5 x 0,1 cm | L1 4 x 0,6 | P



ECO EXPRESS

11474

Cork writing set

Metal writing set with cork coating, including a twist ballpen with large capacity refill and a rollerball. Both pens are delivered in a cork box. Your logo will be engraved to the right of the clips, laser costs are for both pens.

17,5 x 5,3 x 2,5 cm | L4 4 x 0,6 | K



14043

Velour pouch for one pen

Velour pouch for 1 writing pen.

16 x 3 x 0,1 cm | P



03

13



10929

Cardboard box

Black cardboard packaging for a writing instrument.

17 x 4 x 2,5 cm | T3 5 x 2 | N





ECO ⚡ EXPRESS

12527

Wooden ball pen

Ballpoint pen made of lacquered wood with a blue writing refill and silver applications. Your advertising will be engraved to the right of the clip.

✂ 14,3 x Ø 1 cm | 📏 L1 4 x 0,6 | 🏠 P



ECO ⚡ EXPRESS

12190

Ballpen with Wood Coating

Ballpen with push mechanism and wooden coating, blue writing big refill and golden applications. Your Logo will be engraved right from the clip.

✂ 14,2 x Ø 1 cm | 📏 L1 4 x 0,6 | 🏠 KS



ECO ⚡ EXPRESS

12550

Wooden ball pen

Wooden ballpoint pen with a blue refill, silver applications and two notches around the barrel. Your advertising will be engraved to the right of the clip.

✂ 14,8 x Ø 1 cm | 📏 L1 4 x 0,6 | 🏠 P





ECO EXPRESS

12538

Inkless pen

Sustainable inkless pen made of bamboo with an alloyed lead that oxidizes on the paper. Your advertising will be engraved on the shaft. The gray typeface cannot be erased.

✂ 13,8 x ø 0,9 cm | ☒ L1 4 x 0,6 | ☐ N



ECO

11291

Wooden ballpen with black plastic cap

Handy, black writing ballpen made of wood with black plastic cap. Your logo will be engraved.

✂ 15,1 x ø 0,7 cm | ☒ T1 4 x 0,6 | ☐ P



ECO EXPRESS

11495

Bamboo ballpen with sharp clip

Plastic ballpen with bamboo coating, silver applications, blue writing refill, and extravagant clip. Your advertisement will be engraved to the right of the clip.

✂ 14,4 x ø 1,2 cm | ☒ L1 4 x 0,6 | ☐ KS



ECO EXPRESS

11496

Metal twist ballpen with bamboo coating

Metal twist ballpen with bamboo coating, blue writing refill, and silver applications. Your advertisement will be engraved to the right of the clip.

✂ 15,4 x ø 1,4 cm | ☒ L1 3,5 x 0,6 | ☐ KS





⚡ EXPRESS

12558

Bamboo writing set

Writing set consisting of a blue ballpoint pen and a rollerball made of bamboo with silver and colored applications. The set is delivered in an environmentally friendly cardboard box. Your advertising will be engraved on both writing instruments to the right of the clip (engraving price for both writing instruments).

✂ 17,2 x 5,2 x 2,1 cm | ☒ L6 4 x o6 | ☐ K



⚡ EXPRESS

12575

Bamboo writing set

Writing set consisting of a blue writing ballpoint pen and a mechanical pencil made of bamboo with silver applications. The set is delivered in an environmentally friendly cardboard box. Your advertising will be engraved on both writing instruments to the right of the clip (engraving price for both writing instruments).

✂ 17,2 x 5,2 x 2,2 cm | ☒ L6 4 x o,6 | ☐ K



⚡ EXPRESS

12537

Metal pen with bamboo appliques

Matt twist ballpoint pen made of metal with a blue refill and bamboo appliques on both sides. Your advertising will be engraved on the ballpoint pen.

✂ 14,8 x 1,1 x 1,6 cm | ☒ L1 4 x o,6 | ☐ KS



🌿 ECO ⚡ EXPRESS

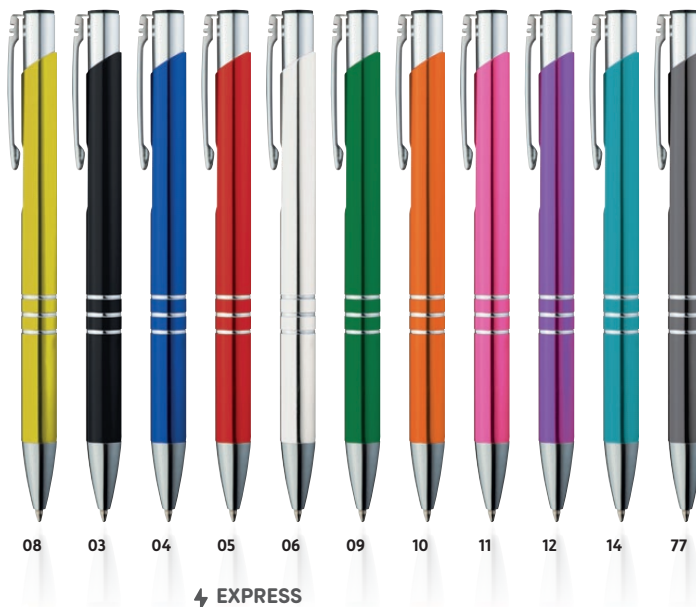
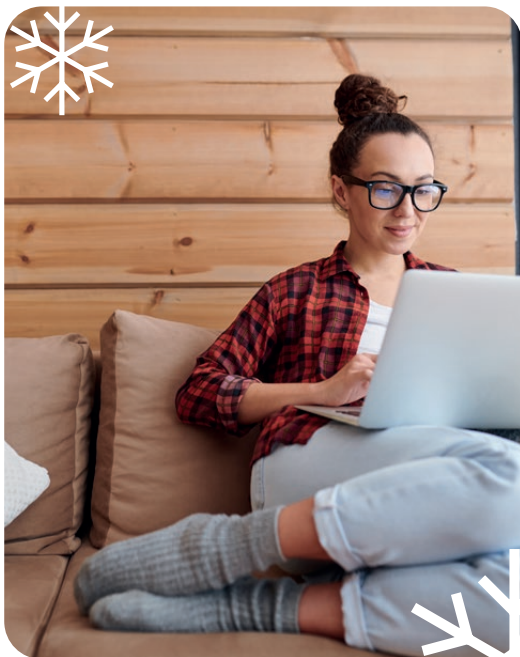
12194

Ballpen with Bamboo Coating

Ballpen with push mechanism and bamboo coating, blue writing big refill, anthracite applications and Touch-function. Your Logo will be engraved right from the clip.

✂ 14,9 x ø 1,1 cm | ☒ L1 4 x o,6 | ☐ N





13339

Metal ball pen

The ultimate metal ball pen for your company, with large blue writing refill. Your logo will be engraved below the clip.

✂ 13,6 × Ø 1 cm | ☒ L1 4 × 0,6 | ☐ P



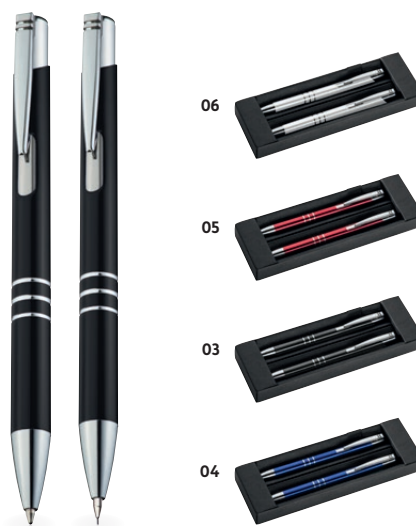
⚡ EXPRESS

10761

Writing set with ball pen and rollerball pen

Aluminium writing set, with 1 blue-writing ball pen and 1 rollerball. We will engrave your logo to the right of the clip. Laser costs are for both pens.

✂ 17,5 × 5,7 × 2,2 cm | ☒ L6 4 × 0,6 | ☐ K



⚡ EXPRESS



13330

Metal pen & pencil set

Metal pen & pencil set in a black paper box. The pen comes with a large blue writing refill. We will engrave your logo on both pens.

✂ 17,5 × 5,7 × 2,2 cm | ☒ L2 4 × 0,6 | ☐ K





⚡ EXPRESS

10419

Metal ball pen

Slim aluminium ball pen with blue writing refill. Your logo will be laser engraved below the clip.

✂ 14,3 x ø 0,8 cm | ☒ L1 4 x 0,6 | ☐ P



⚡ EXPRESS

17605

Elegant metal ball pen "slim line"

Elegant metal ball pen in a slim shape with chromed clip and blue-writing refill. We will engrave your logo next to the clip.

✂ 13,3 x ø 0,7 cm | ☒ L1 3,5 x 0,4 | ☐ P



⚡ EXPRESS

10871

Slim metal ballpoint pen

Slim retractable pen in metal with blue-writing refill. Your logo will be engraved to the right of the clip.

✂ 13,8 x ø 0,9 cm | ☒ L1 4 x 0,6 | ☐ P



⚡ EXPRESS

10418

Metal-Touchpen

Twist metal ball pen with touch function and blue writing refill, with 8 engraved rings that make writing more convenient. Your logo will be laser engraved below the clip.

✂ 12,8 x ø 0,9 cm | ☒ L1 4 x 0,6 | ☐ P



⚡ EXPRESS

10964

Metal ballpen with rubber coating and touch function

Slim metal pen with rubberized coating, blue writing refill, and touch function. We will engrave your logo next to the clip.

✂ 14,5 x ø 0,8 cm | ☒ L1 6 x 0,5 | ☐ P





12557

RPET pen

Environmentally friendly, transparent ballpoint pen made of RPET with a large blue refill, curved clip, slightly offset grip zone and RPET logo. Your logo will be printed to the right of the clip.

✂ 14,8 x Ø 1,1 cm | ☒ T1 4 x 0,5 | ☐ P



12552

RÜET pen

Classic ballpoint pen made of recycled PET, transparent with silver applications, rubber sleeve and large-capacity blue refill. The advertisement will be printed to the right of the clip.

✂ 14,6 x Ø 1,2 cm | ☒ T1 4 x 0,6 | ☐ P



ECO

11435

Wheat straw ballpen with silver applications

Classic plastic ballpen with wheat straw coating, silver applications, and blue writing refill. Your advertisement will be printed to the right of the clip.

✂ 14,5 x Ø 1,2 cm | ☒ T1 4 x 0,6 | ☐ KS



ECO

11434

Nature ballpen with silver applications

Ballpen with natural straw coating, silver applications, and blue writing refill. Your logo will be printed to the right of the clip.

✂ 13,8 x Ø 1 cm | ☒ T1 4 x 0,6 | ☐ KS





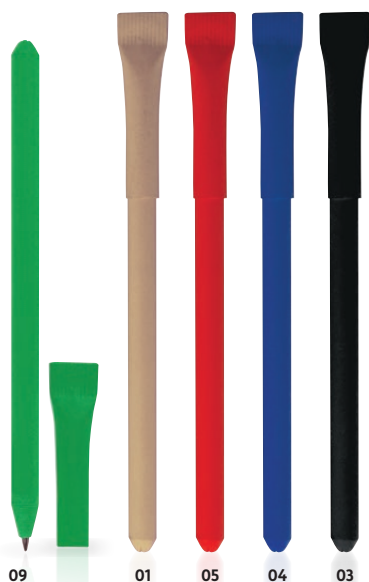
ECO

12565

Paper pen

Blue writing ballpoint pen made from recycled paper, the colored applications are made from corn. Your advertisement will be printed to the right of the clip.

✂ 14,5 x ø 0,9 cm | ☒ T1 4 x 0,5 | ☐ N



ECO

10866

Cardboard pen

Environmentally friendly cardboard ball pen with blue writing refill. We will print your logo on the pen.

✂ 13,9 x ø 0,7 cm | ☒ T1 4 x 0,5 | ☐ N



ECO

10397

Paperpen

Paper pen made from recycled paper with blue writing refill. Your logo will be printed below the clip.

✂ 14,3 x ø 1 cm | ☒ T1 4,0 x 0,6 | ☐ P





17717

Plastic ball pen with sparkling dot grip zone

Plastic ball pen with sparkling dots grip zone and large blue refill. We will print your logo on the barrel.

✂ 14,2 x Ø 1,1 cm | ☐ T1 4 x 0,7 | 田 P



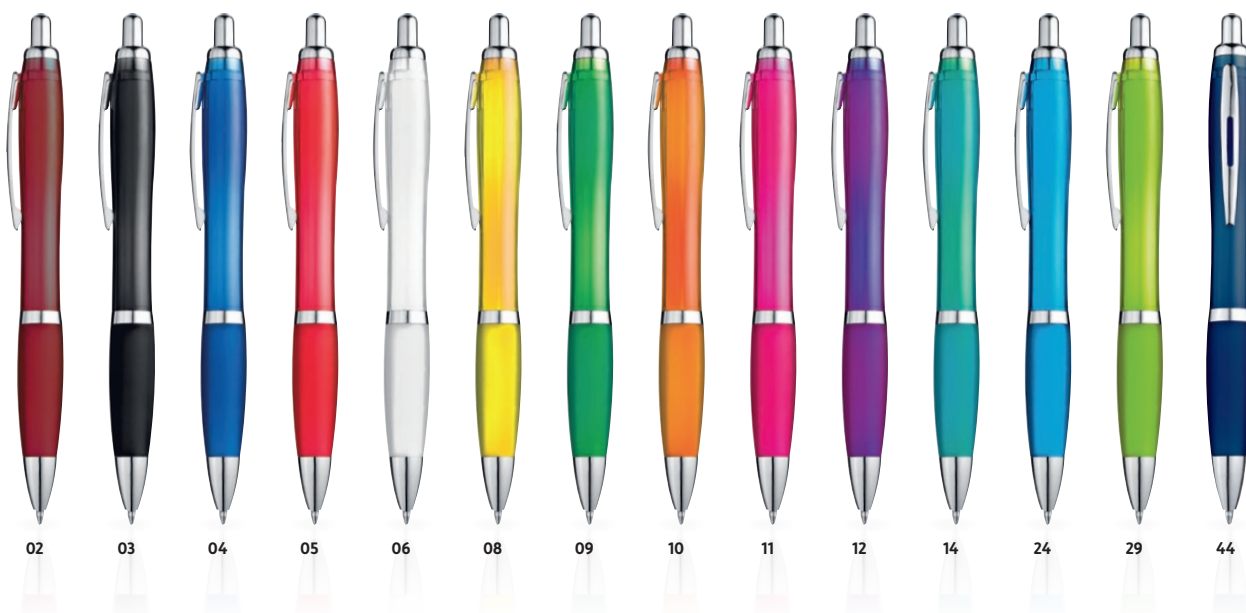
10945

Plastic ballpoint pen with metal clip

Plastic ballpoint pen with blue writing refill, colored shaft and metal clip. Your advertisement will be printed on the barrel.

✂ 14 x Ø 1 cm | ☐ T1 4 x 0,6 | 田 P





11682

Transparent ball pen with rubber grip

Transparent ball pen with silver metal clip, rubber grip zone and blue-writing large refill. We will print your logo to the right of the clip.

✂ 14,5 x ø 1,3 cm | ☒ T1 4 x 0,6 | ☐ P



13538

Plastic ball pen

Colourful plastic ball pen with a jumbo blue writing refill and silver applications. We will print your logo on the barrel.

✂ 14 x ø 1,1 cm | ☒ T1 4,5 x 0,6 | ☐ N

10694

Plastic ball pen with patterns

Plastic ball pen with transparent applications, large blue-writing refill, and patterned barrel. We will print your logo on the clip.

✂ 14,4 x ø 1,1 cm | ☒ T1 3 x 0,5 | ☐ P





11683

Plastic ball pen

Plastic ball pen with white barrel, metal clip, blue-writing refill, and coloured rubber grip. We will print your logo to the right of the clip.

✂ 14,5 x ø 1,3 cm | ☒ T1 4 x ø 0,6 | ☐ P



CrisMa®



11268

Ballpen with colored clip

White plastic ballpen with coloured clip and blue writing refill. Your logo will be printed to the right of the clip, on the shaft or clip.

✂ 13,9 x ø 1,1 cm | ☒ T1 4 x ø 0,7 | ☐ N



10799

Plastic ball pen

Plastic ball pen with twist mechanism, blue-writing refill and elegant clip. We will print your logo on the barrel.

✂ 14,6 x ø 1 cm | ☒ T1 4 x ø 0,7 | ☐ P

13537

Plastic ball pen

Plastic ball pen with a jumbo blue writing refill and colourful applications. We will print your logo on the barrel.

✂ 14,6 x ø 1,1 cm | ☒ T1 4,5 x ø 0,6 | ☐ P





⚡ EXPRESS

INCL. 3 BUTTON CELLS

18954

Laser pointer with LED, touch function and ball pen

Metal laser pointer with LED, modern touch pad and blue-writing refill. Packed in a veneered box*. We will engrave your logo next to the clip.

✂ 12,5 x ø 0,8 cm | ☒ L2 3,5 x 0,5 | 田 K



⚡ EXPRESS

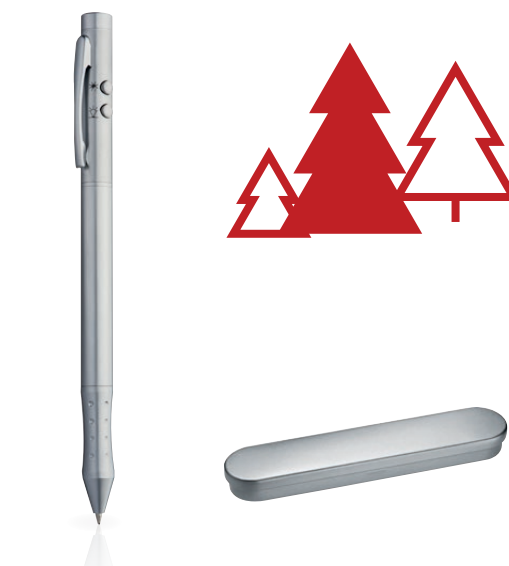
INCL. 3 BUTTON CELLS

15318

Laser pointer and LED Pen

Metal laser pointer with LED, and blue-writing ball pen in a beautiful wooden box*. We will engrave your logo to the right of the clip.

✂ 13,6 x ø 0,9 cm | ☒ L2 4 x 0,6 | 田 K



⚡ EXPRESS

INCL. 3 BUTTON CELLS

12798

4-in-1 Laser pointer

4-in-1 metal laser pointer + LED, with ball pen (blue and red-writing) in attractive metal box*. We will engrave your advertising on the upper area.

✂ 15,4 x ø 1 cm | ☒ L2 3,5 x 0,6 | 田 K





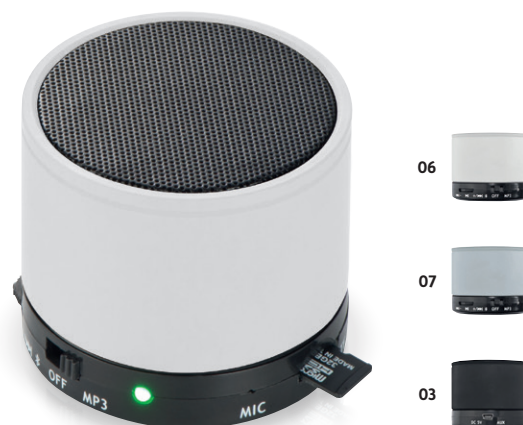
Bluetooth

30588

Bluetooth speaker with bracket

Bluetooth speakers with hands-free function. The anti-slip surface at the top and bottom allows you to hold the speaker on to almost any flat surface. This function also serves as a phone or tablet holder. Large advertising space, Bluetooth 3.0, Micro SD card slot, FM radio, 3 W wireless speaker with on / off switch and volume control. Incl. Micro USB charging cable. Your advertising will be printed on the speaker.

∅ 8 × 6,3 cm | T4 2,5 × 1,2 | K



Bluetooth EXPRESS

43369

Wireless bluetooth speaker

Mini bluetooth speaker with USB connection for charging and radio. Connect your smartphone or tablet wirelessly to the speaker, and enjoy a perfect sound. You can listen to your favourite music in good sound quality with an operating distance of up to 10 meters and a runtime of up to 5 hours. We will engrave your advertising on the speaker.

∅ 6 × 5,1 cm | L2 3 × 2 | K



Bluetooth ECO EXPRESS

30969

Bluetooth speaker with bamboo coating

Bluetooth speaker with bamboo sheathing, mini USB port, card slot, lighting, and charging cable. We will engrave your logo on the sheathing.

∅ 7,2 × 4,3 cm | L3 4 × 3 | K



Bluetooth EXPRESS

30899

Aluminium bluetooth speaker

Round bluetooth speaker in aluminium with built-in rechargeable battery, integrated radio, TF card slot, and flashing LED light on the bottom, micro USB charging cable included. We will engrave your logo on the speaker.

∅ 7 × 5 cm | L2 3 × 2 | K





Bluetooth 8 000 mAh EXPRESS

30960

8.000 mAh power bank with speaker and phone holder

Power bank with 8.000 mAh output and integrated speaker, which functions also as a phone holder. We will place your logo on the powerbank.

15,5 x 7 x 2,7 cm | L3 6 x 2 | K



Bluetooth EXPRESS

30821

Speaker

Wireless Bluetooth speaker with built-in radio, USB charging cable, USB and mini USB port, volume control and memory card slot. We will engrave your logo on the rubberized edge of the speaker.

10,8 x 3,8 x 8 cm | L3 3 x 1,5 | K



Bluetooth

30489

Bluetooth loudspeaker with light.

Bluetooth loudspeaker with colour-changing or 3 white light levels. USB-Plug for energy supply and integrated radio. Bluetooth up to 10 meters - Battery duration of approx. 2 hours. Your advertising will be printed on the body.

9,6 x 12,3 cm | T4 4 x 4 | K



Bluetooth EXPRESS

30961

High-quality bluetooth speaker

High-quality bluetooth stand speaker with AUX / USB port, SD card slot, built-in microphone, and built-in battery that can be re-charged via micro USB cable. Your advertisement will go directly on the speaker.

13,5 x 16,2 cm | L3 4 x 1,2 | K



Bluetooth

30183

Bluetooth loudspeaker

Bluetooth loudspeaker with integrated radio, volume regulation, USB, DC5V, AUX and TF port. Bluetooth distance of up to 10 meters. We will print your logo on the speaker.

26 x 13,2 cm | T4 5 x 3 | K



**32316****Headset with Sorroundsound**

Headset with sorroundsound, microphone and volume control. With the existing noise cancelling you won't hear any background noise. Your Logo will be printed on one earcup.

▣ 18 × 8,2 × 20 cm | ✂ T4 3,5 × 0,9 | 田 K



Bluetooth

30822**Bluetooth headset in transparent case**

Bluetooth headset with volume control and USB charging cable in a plastic case with hanging loop. We will print your logo on the case.

▣ ø 3 × 9,5 cm | ✂ T3 2,5 × 1,5 | 田 K



Bluetooth

30592**Headphones**

Headphones with Bluetooth version 4.0, with collapsible ear cups and adjustable headband. Left earphone with integrated operating functions. Range: approx. 10 m, with integrated rechargeable battery. Including USB charging cable and connector for 3.5mm plug. Your advertising will be printed on the bracket.

▣ 19,3 × 7,5 × 18 cm | ✂ T4 4 × 2 | 田 K


 Bluetooth **EXPRESS**
30921**Earphones**

High-quality bluetooth headset with metal plates on the earcups, ideal for laser engraving.

▣ 16 × 8,5 × 18 cm | ✂ L3 ø 4 cm | 田 K





Bluetooth®

30471

Bluetooth earphones

Bluetooth earphones with volume regulation. They come in a zipper pouch with an USB charging cable. Your logo will be printed on the pouch.

▣ 8,8 × 3,9 cm | ✕ T3 0 3,5 | 田 P



Bluetooth®

31462

In-ear headphones

Ergonomic in-ear Bluetooth headset with USB charging cable and charging cradle, which also functions as case. Running time 2-3 hours, charging time approx. 1 hour, 35mAh battery. Your advertisement will be printed on the case.

▣ 9 × 4 × 3 cm | ✕ DC1 5 × 2 | 田 K



Bluetooth® ECO EXPRESS

32579

Inearphones in a bamboo box

Ergonomic in-ear Bluetooth 5.0 earphones with charging indicator in a USB charging station that serves as a storage location. Bluetooth range up to 10 meters, charging time approx. 1 hour, running time 2-3 hours and 300 mAh battery. Your advertising will be engraved on the box.

▣ 7,5 × 4,7 × 3,2 cm | ✕ L2 3 × 2 | 田 K





ECO ⚡ EXPRESS

31961

3 in 1 Wheatstraw Charging Cable

3 in 1 Wheatstraw Charging cable, with USB charging Cable, Micro USB, C-Type and 8 pin Plug. You Logo will be engraved onto the black surface where your Logo will shine during the charging process.

17,8 × 2,8 × 1 cm | L2 3 × 2 | K



⚡ EXPRESS

20785

Keychain with USB charging cable

3 in 1 plastic keychain with USB port, Android, and iOS charging cables, perfect for when you are on-the-go! We will engrave your logo on the black metal piece, the engraving lights up during the charging process.

17,5 × 2,5 × 2,5 cm | L2 4,5 × 0,7 | K



20784

Cable box

3 in 1 charging cable with USB adapter, micro USB adapter, Android and iOS charging cable, in a plastic box. We will print your logo on the box.

6,5 × 5,9 × 2,9 cm | T3 4,5 × 2 | P



**21652****Extendable charging cable with 3 plugs**

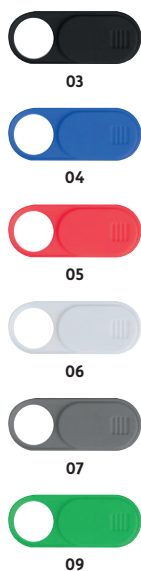
Extendable charging cable in a plastic housing with a USB plug and an iOS, C-Type and Micro USB connection. Your advertising will be printed on the free white surface.

12 x 4 x 1,8 cm | T3 ø 3 | K

**20618****Keyring with charging cable**

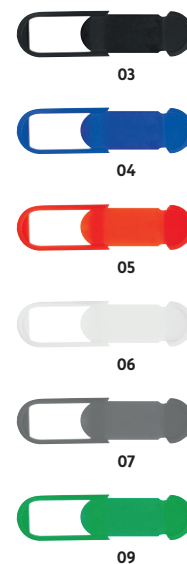
Handy 2in1 USB-charging cable with keyring, for Apple (iPhone® from version 5 and above) and Android devices. We will print your logo below the ring.

14,5 x 2,5 x 0,5 cm | T3 2 x 1 | P

**22534****Mobile-cam cover**

Cover for the mobile phone camera, easy to open and close and with 3M adhesive on the back, for secure and permanent attachment. Your advertising will be printed on the cover.

2,8 x 1,1 x 0,1 cm | DC0 1,5 x 1,0 | N

**22533****Laptop webcam-cover**

Ultra thin cover for webcam of computer, laptop, MacBook or iMac with 3M adhesive on the back for a secure hold. Protect yourself and your privacy. The advertisement is printed on the cover.

4,2 x 1,6 x 0,2 cm | DC0 3,5 x 1 | N



**32516****USB + C-Type Travel Set**

Travel set consisting of a USB and a C-type connection, optionally on the mains plug or the 12-volt plug. Packed in a zipper case. Our logo will be printed onto the case.

10,5 × 5,5 × 4,7 cm | T3 5 × 2 | K

**40394****Travel adapter**

Wherever you travel to, from now on you will always have the needed adapter with you (US, UK, AUS, EU, Asia). Your logo will be printed on the box.

6,2 × 5,9 × 4,6 cm | T3 4 × 2,5 | K



2 200 mAh

20081**Travel set - Powerbank, EU Plug, USB Charger**

Travel set including USB charger for the car, powerbank (2,200 mAh), EU plug, and a USB cable, packed in a case. We will print your logo on the case.

11,7 × 8,1 × 3,8 cm | DC1 4 × 2 | K





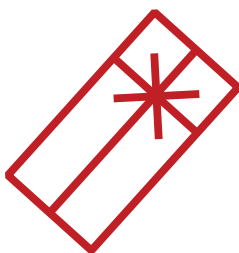
10 000 mAh

20518

Power bank 10.000 mAh

Power bank with a capacity of 10.000 mAh, USB charging cable and digital operation display to show the remaining power. You can recharge your smartphone several times with this plastic power bank. We will print your logo on the top.

14 × 6,2 × 2,2 cm | T4 3 × 3 | K



20 000 mAh

31498

Power bank 20.000 mAh

Plastic power bank with 20.000 mAh capacity, digital charging display and charging cable included. The 2 USB ports make it easy to charge 2 devices several times at the same time. Your advertisement will be printed on the power bank.

14,4 × 6,5 × 2,5 cm | T4 4 × 3 | K

10 000 mAh

31184

Power bank 10.000 mAh

Power bank in plastic with 10.000 mAh capacity, charging cable, and display. Through its two USB ports 2 smartphones/tablets can be charged simultaneously. We print your advertising on the smooth surface.

8,8 × 6 × 2,2 cm | T4 3 × 3 | K





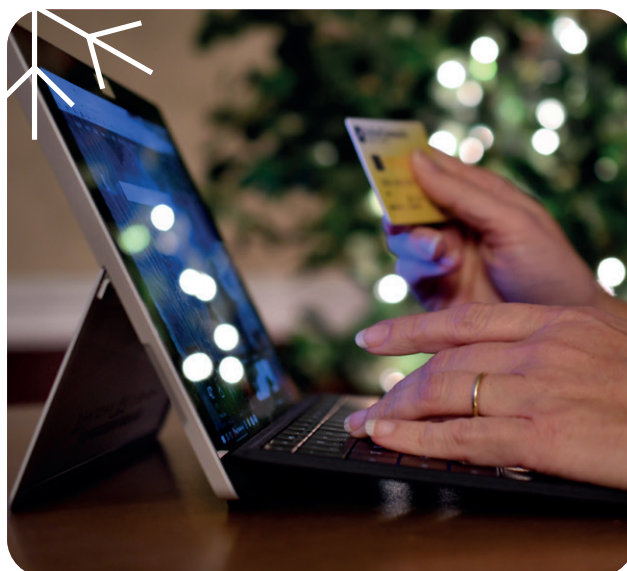
ECO 8 000 mAh EXPRESS

31473

Bamboo power bank

8.000 mAh Power bank in bamboo case, includes charging cable. Your logo will be engraved on the case.

13,8 × 6,9 × 1,4 cm | L3 5 × 3 | K



SOLAR ECO 8 000 mAh EXPRESS

32563

Solar power bank

Solar power bank in a bamboo housing with 8,000 mAh of power and a charging cable, flexibility even without a socket. The advertising is engraved on the bamboo surface.

14,2 × 7,1 × 2 cm | L2 2 × 1 | K





☀️ SOLAR 🔋 4 000 mAh 🌿 ECO ⚡ EXPRESS

23559

Solar powerbank

Solar metal powerbank with a capacity of 4.000 mAh including a charging cable. You can now charge your phone or tablet anytime/anywhere without a plug socket. We will print your logo below the solar field.

📏 12,5 × 7,8 × 1,4 cm | 📏 L3 6 × 1 | 📏 K

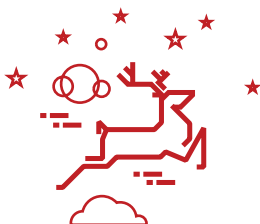
☀️ SOLAR 🔋 8 000 mAh 🌿 ECO ⚡ EXPRESS

30824

Solar powerbank - 8000 mAh

Solar powerbank made of metal, with 8000 mAh capacity and USB charging cable. It allows you to charge your smartphone or tablet several times. We will engrave your logo on the back.

📏 15,2 × 7,5 × 1 cm | 📏 L3 4,5 × 2 | 📏 K



🔋 4 000 mAh ⚡ EXPRESS

40638

4000 mAh Powerbank with suction cups

Powerbank with suction cups, 2in1 charging cable (Android + iOS) and 4000 mAh power capacity, fix it directly to your smartphone. We will print your logo on the front.

📏 12,3 × 5,6 × 1,3 cm | 📏 L2 4 × 3 | 📏 K



📶 WIRELESS 🔋 8 000 mAh

30823

Wireless powerbank - 8000 mAh

Wireless metal power bank with 8000 mAh capacity and USB charging cable for Android and iOS Qi-enabled smartphones. Just place your smartphone on the powerbank and it will charge automatically. Your advertisement will be printed on the top.

📏 15,2 × 7,2 × 1,6 cm | 📏 T3 4 × 3 | 📏 K





WIRELESS 4 000 mAh ECO EXPRESS

21851

Bamboo Wireless Charger with Pen Holder

Bamboo Wireless Charger with pen holder. When the charger is fully loaded, the green light will shine. Cable included. Your Logo will be engraved onto the pen holder.

14,8 x 11 x 11,5 cm | L3 5 x 3 | K



WIRELESS 4 000 mAh ECO

31455

Bamboo Wireless Charger with 2 USB ports

Wireless charger with bamboo coating and 2 USB outputs. Your logo will be engraved.

9 x 9 x 1 cm | L3 5 x 3 | K



WIRELESS ECO

31515

Desk clock with integrated wireless charger

Bamboo desk clock with smartphone holder, wireless charger, and storage compartment. USB charging cable included. Your logo will be printed.

14,8 x 7 x 7 cm | T4 2,5 x 4 | K



WIRELESS ECO

31499

Wireless charging desk pad

Bamboo desk pad with smartphone holder, wireless charger and storage compartment for different utensils. USB charging cable included. Your logo will be engraved.

25,5 x 13,5 x 1,8 cm | L3 5 x 3 | K





ECO EXPRESS

22425

Limestone Cement Wireless Charger

Wireless Charger made from Limestone Cement and cork for perfect Hold. Suitable with for all Qi-compatible Mobile Phones. Your Logo will be engraved onto the cork part.

Ø 8,9 × 1,4 cm | T4 4 × 2 | K



ECO EXPRESS

22426

Bluetooth Speaker with inductive charger

Massive Bluetooth Speaker from Limestone Cement with brilliant sound and a Bamboo Surface, which is a Wireless Charger. Your Logo will be engraved on the Bamboo Surface.

10,7 × 6,4 × 7,7 cm | L3 3 × 4 | K





ECO ⚡ EXPRESS

22458

Bamboo Phone Holder

Bamboo Phone holder for sticking together with an opening space for the charging cable. Perfect for every desk. Your Logo will be engraved on the holder.

8 × 6,5 × 13 cm | ☒ L3 5 × 3 | ☐ K



WIRELESS ECO

22564

Penpot with deskclock

Pen holder and desk clock with Bamboo front, multifunctional clock, thermometer, calendar, alarm clock, timer and birthday reminder. Your advertising will be printed on the bamboo front.

10,6 × 5,7 × 11,9 cm | ☒ T4 4 × 2 | ☐ K



ECO ⚡ EXPRESS

EXKL. 3 UM4 BATTERIEN

42462

Desk clock with black display and blue LED display

Elegant desk clock with wooden casing, black display and blue LED display showing time, date and temperature alternately. We will engrave your logo on the top.

6,2 × 6,4 × 6,3 cm | ☒ L3 4 × 4 | ☐ K



ECO ⚡ EXPRESS

22263

Everlasting bamboo desk calendar

Reusable bamboo desk calendar with non-slip bottom. Your logo will be engraved onto the basis.

14,8 × 5,5 × 5,7 cm | ☒ L3 5 × 2 | ☐ K





EXCL. 1 UM3 BATTERY

22918**Luxurious desk clock**

Elegant rotating aluminium desk clock. Integrated in a lacquered wooden base with pen holder. An eye-catcher on every desk. We will engrave your logo on the holder.

17,2 x 7,8 x 8,7 cm | T4 5 x 3 | K

**92567****RPET gloves**

Gloves made of RPET and soft acrylic with specially manufactured tips on the thumb, index and middle finger, which enable the operation of smartphones without taking off the gloves, an ideal winter gadget. Your advertising will be printed on the back of your hand.

one size | TT1 4 x 4 | N

**98765****Acrylic gloves with touch tops on two fingers**

Using your smartphone while keeping your hands warm during winter - this is no problem with these touch screen gloves made of soft acryl with conductive tips on the thumb and index fingers. We will print your logo on a glove.

one size | TT2 5 x 5 | P





CrisMa®

EXKL. 1 UM3 BATTERIE

41238

CrisMa wall clock

Exclusive, pioneering CrisMa design wall clock, featuring hygrometer and thermometer. We will print your logo on the removable plate.

□ 34,8 × 4,5 cm | ✖ T4 8 × 4 | 田 K

03



04



09



05



06



CrisMa®

EXKL. 1 UM3 BATTERIE

47871

Wall clock with hygrometer, thermometer and click system

Fancy wall clock with hygrometer and thermometer, features a clever click system for fast and trouble-free printing. We will print your logo on the removable plate.

□ 29,1 × 4 × 22,6 cm | ✖ T4 8 × 4 | 田 K

03



06



06



EXKL. 1 UM3 BATTERIE

41223

Wall clock with hygro and thermometer

Modern wall clock with thermo and hygrometer. We will print your advertising on the area below the number 12.

□ 25,3 × 4,3 cm | ✖ T4 3 × 1 | 田 K + B



⚡ EXPRESS

EXKL. 1 UM3 BATTERIE

40744

Aluminium wall clock

Wall clock in aluminium with the world map in the background, an eye-catcher in every room. Your logo will be engraved.

□ 30 × 2,7 cm | ✖ L3 3 × 2 | 田 K





CrisMa  ECO

EXKL. 1 UM3 BATTERIE

42591

Wooden wall clock

Wall clock made of wood with hour and minute hands and raised numbers made of wood. Your advertisement will be printed on the watch

▣ Ø 31,5 × 3 cm | ✖ T4 5 × 4 | 田 K



CrisMa

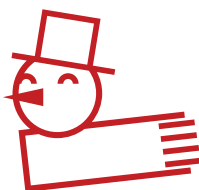
EXKL. 1 UM3 BATTERIE

43449

Wall clock, half display printable

Stylish wall clock with hygro and thermometer - the key is that half of the display can be easily taken out and printed all over. Endless possibilities for printing your advertising!

▣ Ø 35 × 4,8 cm | ✖ TC2 32 × 15 | 田 K



EXKL. 1 UM3 BATTERIE

41213

Wall clock

Wall clock with hygro and thermometer, made of plastic. We will print your logo between the hygro and thermometer.

▣ 27,3 × 3,5 × 32 cm | ✖ T4 5 × 4 | 田 K





⚡ EXPRESS

20886**Glass trophy in classy packaging**

Round glass trophy with a sturdy pedestal, packed in a noble box* with satin lining. Your advertising will be engraved to the glass.

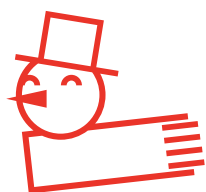
▣ 16 × 5 × 18 cm | ✂ L3 Ø 8 cm | 田 K

⚡ EXPRESS

27502**Big glass trophy**

Elegant glass award, safely packed in a blue box* with satin inlay and decorated with laser engraving.

▣ 17,5 × 6,5 × 19 cm | ✂ L3 5 × 3 | 田 K



⚡ EXPRESS

27504**Small rectangular glass block**

With its distinct shape this glass cube highlights your advertising. Safely packed in a blue box* with satin inlay. Laser engraving.

▣ 6,4 × 2 × 9 cm | ✂ L3 5 × 3 | 田 KS

⚡ EXPRESS

27505**Glass block with globe**

Make your advertising an eye-catcher on every desk. Features removable globe and pen holder on attractive glass block. Supplied in a blue box*. Laser engraving on the front.

▣ 10 × 2 × 5,7 cm | ✂ L3 5 × 3 | 田 K



⚡ EXPRESS

27503**Glass block with small clock**

Elegant glass desk decoration with a small clock and space for your branding, which will be engraved directly onto the glass. Safely packed in a blue box* with satin inlay.

▣ 8 × 4,8 × 9,5 cm | ✂ L3 4 × 3 | 田 K





ECO ⚡ EXPRESS

22266

Metal Business Card Holder with cork Surface

Metal Business Card Holder with cork surface and magnetic catch. Your Logo will be printed onto the cork surface.

▣ 9,3 × 6,1 × 1,3 cm | ✂ T3 5 × 2 | 田 K



⚡ EXPRESS

28502

Business card holder with artificial leather covering

For stylish storage of your business cards, the case is upholstered with high-quality artificial leather and provides a magnetic closure. We will engrave your logo on the metal plate.

▣ 9,6 × 6,6 × 1,4 cm | ✂ L2 3 × 1,2 | 田 K



⚡ EXPRESS

27445

Metal business card holder

High-quality metal business card holder, finished in a shiny chrome. The cover features a magnetic closure and is coated with artificial leather. Your logo will be engraved on the metal plate.

▣ 9,7 × 6,3 × 1,5 cm | ✂ L2 5 × 0,8 | 田 K



A5

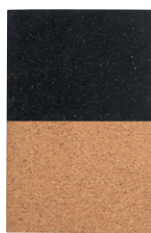
20088

Notebook with business card compartments

PU A5 notebook with 256 lined pages, ball pen sleeve and space for 6 credit cards. We will print your logo on the front.

▣ 14,5 × 21 × 2,5 cm | ✂ T3 5 × 3 | 田 K

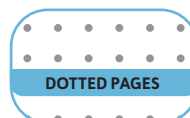
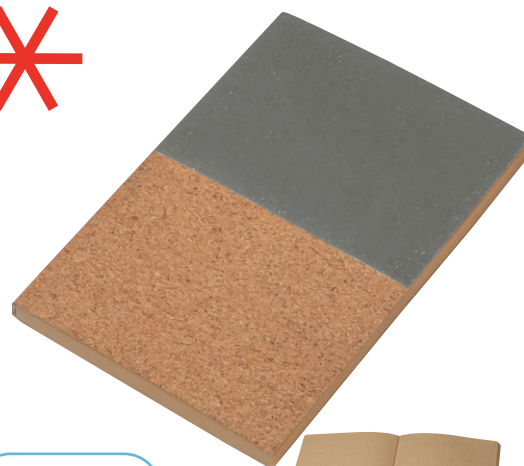




03



07



ECO A5

21811**A5 cork book**

A5 cork book with 160 pages - dot printed - which you can use perfectly for sketches or writing. Your logo will be printed on the cover.

13,7 × 20,6 × 1,2 cm | 5 × 3 | KS



ECO A6

20827**Cork notebook - DIN A6**

DIN A6 notebook with cork cover, 160 lined pages, bookmark, and rubber band for closing. We will print your logo on the front.

9 × 14 × 1,4 cm | 51 6 × 10 | KS



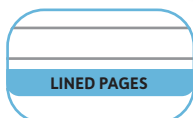
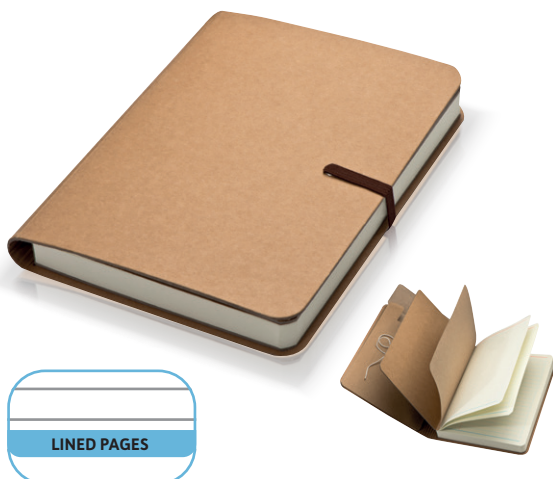
ECO A5

20826**Cork notebook - DIN A5**

DIN A5 notebook with cork cover, 160 lined pages, bookmark, and rubber band for closing. We will print your logo on the front.

14 × 21 × 1,5 cm | 51 10 × 10 | KS



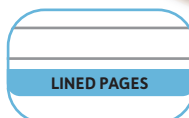


ECO

23445**Notebook with brown rubber band, 120 sheets**

Notebook with rubber band for closing, 120 lined pages and extra compartment. We will print your advertising on the natural coloured cover.

13,8 × 18,8 × 1,7 cm | T3 5 × 3 | KS



ECO

20497**To do pad with pen**

Eco-friendly ring binder with 70 pages "to do" list and ball pen. We will print your logo on the cover.

9 × 14,4 × 0,9 cm | T3 5 × 3 | P



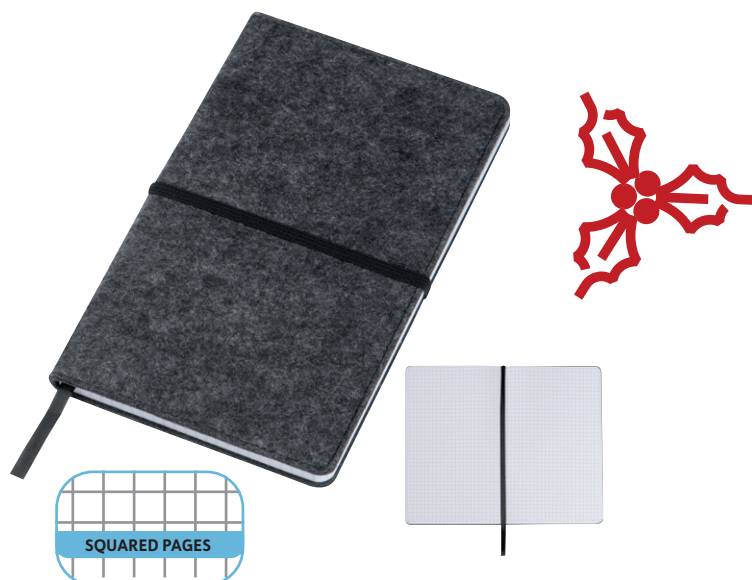
ECO A5 EXPRESS

28909**Note pad with bamboo cover A5**

Trendy and ecological: note pad in panel format with cover made of real bamboo and 140 lined pages made of unbleached recycling paper, includes a blue-writing pushbutton ball pen made of bamboo. We will engrave your logo on the cover.

14,5 × 18 × 1,7 cm | L3 4 × 2 | KS





SQUARED PAGES

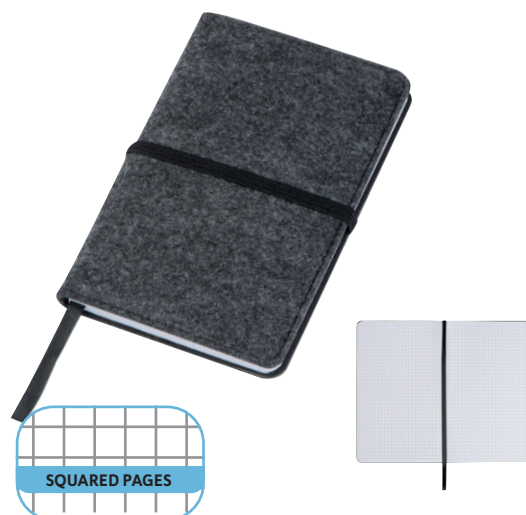
A5

21357

Felt notebook A5

A5 notebook with felt cover, ribbon, rubber band closure, and 192 squared pages. Your advertisement will be printed on the cover.

14,5 × 1,5 × 21 cm | TT1 10 × 10 | N



SQUARED PAGES

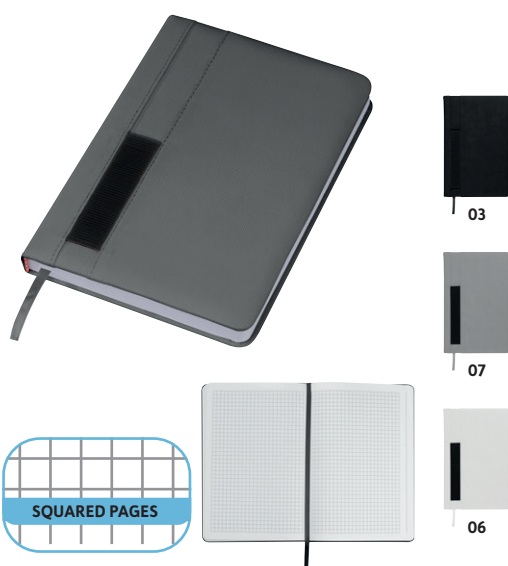
A6

21358

Felt notebook A6

A6 notebook with felt cover, ribbon, rubber band closure, and 160 squared pages. Your advertisement will be printed on the cover.

9 × 1,5 × 14 cm | TT1 6 × 6 | N



SQUARED PAGES

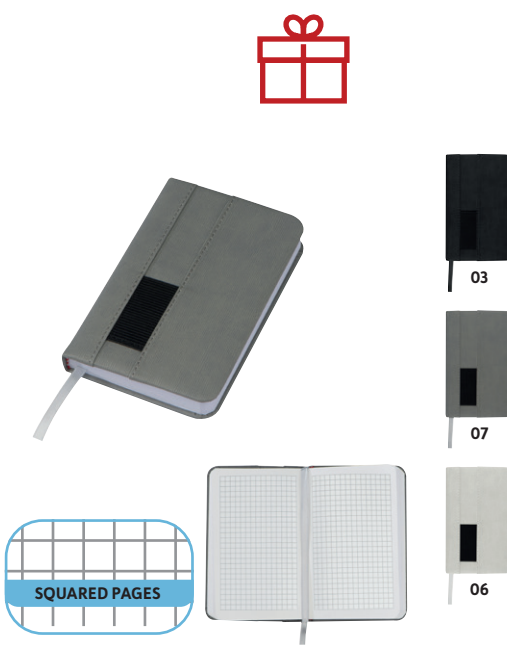
A5

21363

Notebook with pocket A5

A5 notebook with 192 squared pages, ribbon, and structured cover with pocket for e.g. a ballpen. Your advertisement will be printed next to the pocket.

14,6 × 1,8 × 21 cm | T3 4 × 3 | KS



SQUARED PAGES

A6

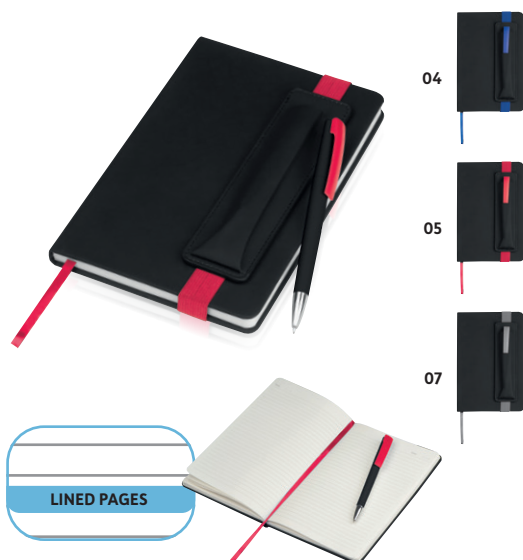
21364

Notebook with pocket A6

A6 notebook with 160 squared pages, ribbon, and structured cover with pocket for e.g. a ballpen. Your advertisement will be printed next to the pocket.

8,8 × 1,7 × 14 cm | T3 4 × 3 | KS





A5

22385**A5 Notebook with PU-Cover**

A5 Notebook with PU-Cover, 192 ruled Papers, Bookmark and an elastic band to close, including Pen Holder. Your Logo will be printed onto the Book.

14,3 × 21,1 × 3,2 cm | T3 5 × 3 | K



A6

20315**Notebook**

Trendy A6 notebook with 160 lined pages for all your spontaneous ideas, with rubber band, pen loop, and pocket loop. We will print your logo on the cover.

8,8 × 14,3 × 1,8 cm | T3 5 × 3 | KS



A5

27636**Black A5 notebook**

Trendy A5 notebook with rubber band, pen loop, and pocket loop. Features folding compartment at the back for all those important papers. We will print your logo on the cover.

13,9 × 21 × 2,2 cm | T3 5 × 3 | P



A4

28636**A4 notebook, lined, with elastic strap**

This large A4 notebook has a lot of space for important notes on its numerous lined pages. The tuck on the back and the elastic strap keep even small notes in place. We will print your logo on the cover.

20,2 × 29,2 × 1,9 cm | T3 5 × 3 | KS





🏠 FINEST BONDED LEATHER 📄 A4 ⚡ EXPRESS

20635

DIN A4 conference folder

A4 folder made of high-quality bonded leather, slip pocket, business card slots, pen loops, smartphone holder and stand, and lined block with a small calendar impression. We will engrave your logo on the outer metal plate.

📏 24,3 × 33,1 × 1,7 cm | 📏 L3 3 × 1 | 🏠 NWP



🏠 FINEST BONDED LEATHER 📄 A5 ⚡ EXPRESS

20634

DIN A5 conference folder with ring binder

A5 folder made of high-quality bonded leather, with zipper, various pockets, pen loop, smartphone holder and stand, ring binder mechanism, and lined block with a small calendar impression. We will engrave your logo on the outer metal plate.

📏 19,8 × 25,5 × 3,5 cm | 📏 L3 3 × 1 | 🏠 NWP





👉 FINEST BONDED LEATHER 📄 A4 ⚡ EXPRESS

20636

DIN A4 conference folder

A4 folder made of high-quality bonded leather, with business card slots, pen loop, smartphone holder and stand, and lined block with a small calendar impression. We will engrave your logo on the outer metal plate.

📏 26,5 × 35 × 4,3 cm | 📏 L3 3 × 1 | 🏠 NWP



👉 FINEST BONDED LEATHER 📄 A5 ⚡ EXPRESS

20633

DIN A5 conference folder

A5 folder made of high-quality bonded leather, with diverse compartments, smartphone holder, pen loop, and lined DIN A5 block. We will engrave your logo on the outer metal plate.

📏 19 × 23,5 × 3 cm | 📏 L3 3 × 1 | 🏠 NWP



👉 FINEST BONDED LEATHER 📄 A4 ⚡ EXPRESS

20637

DIN A4 conference folder with ring binder

A4 briefcase folder made of high-quality bonded leather, with zipper, pockets, business card slots, pen loop, smartphone holder and tablet stand, ring binder mechanism, and lined block with a small calendar impression. We will engrave your logo on the outer metal plate.

📏 28 × 36,8 × 6 cm | 📏 L3 3 × 1 | 🏠 NWP





🏠 **FINEST BONDED LEATHER** 📄 **A4** ⚡ **EXPRESS**

20631

DIN A4 conference folder

A4 folder made of high-quality bonded leather, with zipper, slip pocket, business card slots, pen loops, smartphone holder and stand, compartment for tablet or notebook, and lined block with a small calendar impression. We will engrave your logo on the outer metal plate.

📏 27 × 34,9 × 4 cm | 📏 L3 3 × 1 | 🏠 NWP



🏠 **FINEST BONDED LEATHER** 📄 **A4** ⚡ **EXPRESS**

20632

DIN A4 conference folder with ring binder

A4 briefcase folder made of high-quality bonded leather, with zipper, pockets, business card slots, pen loop, smartphone holder and stand, compartment for tablet or notebook, ring binder mechanism, and lined block with a small calendar impression. We will engrave your logo on the outer metal plate.

📏 27,5 × 36,8 × 6 cm | 📏 L3 3 × 1 | 🏠 NWP





WIRELESS 5 000 mAh A4

20990

Conference folder with integrated power bank

Synthetic leather folder with integrated power bank (5.000 mAh), USB charging cable, wireless charger, pen loop, various card slots, tablet and smartphone holder, and writing pad. We will print your logo on the cover.

25,7 × 32,7 × 3,3 cm | TT2 10 × 5 | P



4 000 mAh

20122

Document folder

Document folder made of bonded leather including a power bank (4.000 mAH capacity), USB-cable, 8 pockets, cell-phone pocket, ball pen loop and cell phone strap. We will print your logo on the folder.

15 × 24,5 × 2,7 cm | TT1 6 × 5 | K



5 000 mAh A4

20123

A4 folder

A4 folder made of bonded leather with integrated powerbank (5.000 mAH capacity), USB-cable, 8 pockets, cell-phone pocket, ball pen loop, tablet pocket and a note pad. We will print your logo on the front.

26,2 × 33,6 × 3,1 cm | TT1 10 × 10 | K





LAPTOP

60953

Briefcase in polyester

High-quality briefcase made of snow polyester with zipped compartment, 2 carrying straps, and shoulder strap. Your logo will be printed on the front.

✂ 37 × 7,5 × 30 cm | 📏 TT2 15 × 12 | 📦 P

LAPTOP

60731

Grey laptop bag

600D polyester laptop bag, with black zippers and front compartment. We will print your logo on the front.

✂ 39 × 9 × 29 cm | 📏 TT2 12 × 5 | 📦 P



LAPTOP

60730

Grey backpack

600D polyester backpack, with black zippers and front compartment. The main compartment is ideal for carrying laptops or notebooks. We will print your logo on the front.

✂ 31 × 15 × 44,5 cm | 📏 TT2 10 × 10 | 📦 P





LAPTOP

60757

Laptop backpack

600x300D polyester backpack, with two side pockets, front compartment, and zippers. We will print your logo on the front.

❏ 30 x 20 x 45 cm | 📐 TT2 10 x 10 | 🌿 P



03



04



05



61338

Backpack with colored applications

Trendy backpack with snowpolyester padded shoulder straps and coloured applications. The backpack can be closed by simple rolling or folding. Your advertising will be printed on the front.

❏ 44 x 13,5 x 50 cm | 📐 TT2 20 x 10 | 🌿 P



LAPTOP

60839

Luxury backpack

Polyester backpack with water-repelling cover, two main compartments, laptop and front pockets, padded shoulder straps, and zippers. We will print your logo on the front.

❏ 32 x 21 x 43 cm | 📐 TT2 10 x 5 | 🌿 N





LAPTOP ANTITHEFT

61299

High-quality backpack with USB port

High-quality, water-resistant backpack made of 65% nylon and 35% polyurethane. With USB port and reinforced breathable shoulder straps. The backpack offers plenty of storage space, and it is suitable for laptops up to 15,6 inches. Your logo will be printed on the front.

✂ 31 × 16 × 45 cm | 📏 S2 20 × 7 | 🏠 NWP



LAPTOP ANTITHEFT WATERPROOF

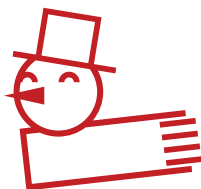
61334

High-quality, water-resistant backpack

High-quality, water-resistant backpack made of 600 DPU, with reinforced, breathable shoulder straps, side and inside pockets, and safety compartment. Suitable for laptops up to 15,8 inches. Your logo will be printed on the front.

✂ 32 × 13 × 48 cm | 📏 TT2 15 × 15 | 🏠 NWP



**✈ ON BOARD/CABIN BAGGAGE****60065****Trolley with hardcover front**

Trolley with hardcover front and four mobile rollers, telescope grip and 3 compartments. We will add a 4-colour label on the position of your preference.

✂ 37 x 21 x 53,5 cm | 田 DO 2,2 x 5 | 田 P

✈ ON BOARD/CABIN BAGGAGE**60064****Backpack with hardcover front**

Backpack with hardcover front and several inner compartments. The hardcover protects your stored notebook or tablet very well. We will print your logo on the carrying strap.

✂ 30 x 17 x 48 cm | 田 TT2 10 x 3 | 田 P

**CrisMa®****60150****City Duffle Bag (Big bag)**

This urban travel bag is a transformer on its own, designed with storage and mobility in mind, you can easily pack your items, roll and go! Expand it to carry more items, sleek as they come, this big duffle is definitely a unique head-turner. We will print your logo on one side.

✂ 55 x 21 x 52 cm | 田 TT3 20 x 10 | 田 P





ECO

62166

Polyester cooler bag with cork bottom

Cooler bag from 600D polyester with cork bottom, big space for up to 6 bottles or cans with 0,5 litre. Your logo will be printed onto the front compartment.

✂ 25 x 17,5 x 17,5 cm | ☒ S1 10 x 5 | ☐ N

ECO

62159

Drawstring bag with cork bottom

Drawstring bag made from 210D polyester with cork bottom. Your logo will be printed on one side of the bag.

✂ 34 x 0,3 x 42 cm | ☒ TT2 20 x 8 | ☐ N



ECO

62571

RPET Backpack

RPET backpack made of 300D two-tone polyester and 210D RPET with a lockable main compartment and two lockable side compartments. Padded shoulder straps and cork bottom. Easy to close by rolling or folding. Your advertising will be printed on the front.

✂ 39 x 16 x 50,5 cm | ☒ TT2 12 x 8 | ☐ N



**LAPTOP****50769****Backpack**

600D polyester backpack with suede-look contrasting bottom and closing strip, with hanging loop, shoulder straps, and front compartment. We will print your logo on the backpack.

✂ 29 x 21 x 48 cm | 📐 TT2 10 x 5 | 🌳 N

**50768****Cooler bag**

600D polyester cooler bag, with two carrying straps, insulation, and suede-look sides and bottom. We will print your logo on the front.

✂ 22 x 16 x 26,5 cm | 📐 TT2 10 x 5 | 🌳 N

**50767****Document folder**

High quality document folder in 600D polyester with suede-look details, zippered front compartment, and carrying straps. We will print your logo on the front.

✂ 37,5 x 13 x 28 cm | 📐 TT2 15 x 10 | 🌳 P



**63801****Polyester suit carrier**

Big and sturdy polyester suit carrier with shoulder straps, carrying handle, additional compartments and subtle metal plate on a label made of artificial leather. We will engrave your logo on the metal plate.

✂ 110 x 60 x 8 cm | ☒ L3 4,5 x 0,8 | 田 P

**60048****Shirt case**

For organized and creaseless shirts on journeys: in this practical microfibre case, shirts are perfectly folded and optimally stored at once. We will print your logo on the case.

✂ 40,7 x 31 x 1,4 cm | ☒ TT2 15 x 10 | 田 P

**63231****Shoe polishing case**

Nostalgic 5-piece shoe polishing set in a high-quality roll case made of velvet artificial leather with pushbutton. Polish and gloss are transparent. We will print your logo on the case.

✂ Ø 7,2 x 16,7 cm | ☒ T4 5 x 2 | 田 K

**⚡ EXPRESS****63212****Shoe polishing and cleaning set**

Fancy shoe polishing set with transparent and black shoe polish, shoe horn, cloth, 2 brushes and sponge. We will engrave your logo on the metal plate.

✂ 15 x 15 x 4,7 cm | ☒ L3 4 x 1 | 田 K



**66902****Fleece picnic and sofa blanket**

Large comfortable and cosy fleece blanket with handy carrying strap and fancy stitching. We will print your logo on the carrying strap or stitch it to the blanket.

❏ 180 x 120 cm | ☒ TT2 10 x 4 | 田 P



44



04



09



29



10



08



05



03



07



06



13



77



ECO

62570**RPET Fleece blanket**

Fleece blanket made from recycled PET with a pull-seam, in a lockable RPET carrier bag. Size of the blanket 120 x 150 cm. Your logo will be printed on the bag.

❏ 40 x 21 x 9 cm | ☒ TT2 10 x 4 | 田 NWP





FOOD SAFE

60856

Picnic basket

Handy picnic basket for two. Includes 6-piece cutlery, waiter's knife, salt and pepper shakers, and two porcelain plates. We will print your advertising through digital print on an aluminium label, which will be attached with a metal chain to the picnic basket.

❏ 30 × 19,2 × 16,5 cm | 📐 ETP 4,5 × 3 | 🌳 K



THE PERFECT PROMOTION TAG

90868

Metal pendant

Metal pendant with small chain, it can be branded with laser engraving or digital print. Ideal for advertising on picnic baskets or trolleys.

❏ 6 × 0,2 × 3,5 cm | 📐 L2 6 × 3,5 | 🌳 P



FOOD SAFE

62337

Picnic basket for 2 persons

Top of the range willow picnic basket for 2 with plastic glasses, porcelain dishes, 6-piece cutlery set and a waiter's knife. An integrated cooling bag keeps your food and drinks fresh. We will print your advertising through digital print on an aluminium label, which will be attached with a metal chain to the picnic basket.

❏ 42 × 29 × 39 cm | 📐 ETP 4,5 × 3 | 🌳 P



FOOD SAFE

61276

Picnic basket for 4 people

Wicker picnic basket for 4 people. The basket includes 4 glasses, 4 porcelain plates, 4 cloth napkins, 12-piece cutlery, salt and pepper shaker, 3 compartments for bottles, waiter's knife, and integrated cooling compartment. Your advertising will be engraved or digitally printed on an aluminium label attached to the basket.

❏ 47,5 × 34,2 × 24,3 cm | 📐 ETP 6 × 3,5 | 🌳 N



**FOOD SAFE****66607****Picnic backpack for 4 persons**

Sturdy polyester picnic backpack for 4 with plastic dishes, trays, waiter's knife, salt and pepper shaker and snack knife. We will print your logo on the front.

✂ 47 x 19 x 44 cm | ☒ TT3 10 x 5 | 田 P

FOOD SAFE**66605****Picnic backpack**

Practical picnic backpack made of sturdy polyester with integrated cooling bag, stainless steel thermal flask, 2 mugs, 2 spoons, 1 knife, salt and pepper shaker and napkin. We will print your logo on the front.

✂ 25 x 16,5 x 34,5 cm | ☒ TT3 12 x 6 | 田 P

**53602****Big boules game**

Big boules game with 6 metal balls, 1 small wooden ball, measuring tape and carrying bag.

✂ 23 x 7 x 16 cm | ☒ TT2 15 x 8 | 田 N

**21100****Office golf set**

The Office Eagle - golf set with a wooden putter. Whether at the office or at home - improve your skills anywhere! We will print (only one colour) or engrave your logo on the case.

✂ 31 x 4,8 x 14,2 cm | ☒ TT2 6 x 4 | 田 K

**50962****84M / 1000M field of view binoculars**

84M / 1000M field of view binoculars, with drawstring and cleaning cloth, packed in a case that can be attached to your belt. We will print your advertising on the case.

✂ 7 x 4,2 x 12 cm | ☒ TT1 4 x 1,8 | 田 K



**60061****Luxury shopping basket with cooler function**

Handy shopping basket made of polyester with foldable carrying handle made of aluminium and a cooler function. Thanks to the special material, the basket can be easily folded and has a carrying capacity of 15 kg. We will print your logo on the basket.

❏ 47,5 x 29 x 23,5 cm | ☒ TT3 20 x 10 | ☐ P

**60060****Luxury shopping basket**

Handy shopping basket made of polyester with foldable carrying handle made of aluminium. Thanks to the special material, the basket can be easily folded and has a carrying capacity of 15 kg. We will print your logo on the basket.

❏ 45,5 x 28,5 x 24,5 cm | ☒ TT3 20 x 10 | ☐ P

**67551****Trunk bag**

XXL allround bag, ideal for shopping and the car. This bag is small when folded and huge when unfolded, with 2 compartments. Thanks to its firm walls, it provides a fix stand in the trunk. It is also ideal for all the equipment in your car. We will print your logo on the front.

❏ 36 x 70 x 31,3 cm | ☒ TT2 20 x 8 | ☐ P

**60063****Foldable shopping trolley**

Foldable shopping trolley made of polyester with integrated cooling compartment. The frame is made of aluminium and includes a hook for hanging the trolley to a shopping cart. We will print your logo on the cover.

❏ 45 x 36 x 95 cm | ☒ TT3 18 x 12 | ☐ P





ECO

67538**Jute bag with bamboo grip**

Eco-friendly jute bag in different colours with bamboo grip and a closing cord. We will print your logo on the front.

✂ 33 x 11,5 x 27 cm | ☒ TT3 20 x 10 | ☐ N

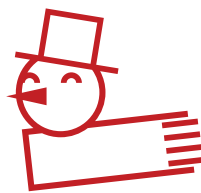


ECO

67536**Jute bag**

Jute bag with robust cord grips and a closing loop. We will print your logo on the front.

✂ 44,7 x 12,5 x 35,5 cm | ☒ TT3 20 x 10 | ☐ N

**60383****Multifunction Feltbag**

Large felt bag with 2 strong faux leather handles in black. Perfect for almost any use. Your logo will be printed by heat transfer to one side.

✂ 43,5 x 9 x 41,5 cm | ☒ TT2 15 x 10 | ☐ P



ECO

61831**Cotton bag with crocheted part**

Eco Tex Standard 100 cotton bag with crocheted middle section, which makes the bag flexible. Your logo will be printed on one side of the bag.

✂ 20,2 x 14,5 x 29,5 cm | ☒ ST 13 x 7 | ☐ N





ECO

60880

Cotton bag with long handles

Eco-friendly cotton bag with long handles, in different colors and a particularly strong grammage of 140g/m². Your branding will be printed on one side.

38 x 0,3 x 42 cm | ST 26 x 27 | 田 N



14



24



04



44



29



77



09



99



02



05



11



03



06



07



08



10





ECO



61298

ECO Tex standard 100 certified Gymbag from environmentally friendly cotton (140g/m)

Gymbag from environmentally friendly cotton (140g/m) in different colors, ideal for sports or on-the-go. Your logo will be printed on one side.

40 x 0,3 x 52 cm | ST 26 x 27 | N



03



04



05



06

ECO



62543

Recycled cotton bag

Oeko-Tex® STANDARD 100 certified gym cotton bag made from recycled cotton. Grammage 140g/m². The advertisement is printed on one side of the bag.

37,5 x 0,3 x 42 cm | ST 26 x 27 | N



03



04



05



06

ECO



62358

Recycled Cotton Bag with Long Handles

Recycled, Eco Tex Standard 100 cotton bag with long handles (140g/m²). Your Logo will be printed on one side of the bag.

37,6 x 0,2 x 41,7 cm | ST 26 x 27 | N





ECO

**62164****Long-handled shopping bag**

Natural-coloured, environmentally friendly cotton bag (140g / m²) with two long handles. We will print your logo on one side.

✂ 37 × 0,2 × 41 cm | 📐 ST 26 × 27 | 🌱 N



ECO

**60859****Foldable shopping bag in cotton**

Natural colored, foldable and environmentally friendly cotton bag (140g / m²) with carrying handle. We will print your logo on one side.

✂ 37,5 × 0,3 × 42 cm | 📐 ST 19 × 19 | 🌱 N



ECO

**61487****Cotton bag with woven carrying handle and bottom fold**

Environmentally friendly, large, natural-colored cotton bag with woven handles and bottom crease. Your advertising will be printed on one side.

✂ 40,5 × 6 × 42 cm | 📐 ST 26 × 27 | 🌱 N



ECO

**61369****Cotton bag with 3 handles**

Nature-colored, environmentally friendly cotton bag with two short handles and one long carrying strap. We will print your logo on one side.

✂ 38 × 0,3 × 41,7 cm | 📐 ST 26 × 27 | 🌱 N





ECO



61399

Carrying bag with jute bottom

Shopping bag made of environmentally friendly cotton and jute. Your advertisement will be printed on one side.

✂ 38 x 0,2 x 42 cm | 📐 ST 26 x 15 | 🌐 N



ECO



61398

Gymbag with jute bottom

Cotton and jute gymbag with drawstring. Your advertisement will be printed on one side.

✂ 40 x 0,3 x 51.5 cm | 📐 ST 26 x 15 | 🌐 N



62542

Jute cooler bag with long handles.

Cool bag made of moisture-proof, laminated jute and insulating inside made of aluminum with zip and extra height, suitable for 6 x 500 ml bottles. The handles, as well as the outer pocket on which your advertising is printed, are made of cotton.

✂ 22,5 x 16 x 24 cm | 📐 TT1 6 x 8 | 🌐 N





FOOD SAFE ECO EXPRESS

82313

Spacious Stainless Steel Lunchbox with Bamboo Lid

Stainless Steel Lunchbox with Bamboo Lid, Bamboo Cutlery and Silicone Strap to close. Your Logo will be engraved on the Lid.

20 x 18 x 7,2 cm | L3 6 x 4 | K



FOOD SAFE ECO EXPRESS

81834

Glass lunchbox with bamboo lid

Borosilicate glass lunchbox with bamboo lid and flexible silicone strap. Your logo will be engraved onto the lid.

20 x 15,3 x 6,5 cm | L3 6 x 4 | K



FOOD SAFE ECO EXPRESS

82531

Lunchbox with two compartments

Two-tier lunch box with two separate compartments (both with their own lid), bamboo lid, a separator, knife, fork and a rubber band to close. Your logo will be engraved onto the bamboo lid.

18,6 x 10,6 x 9,8 cm | L3 6 x 4 | KS



**82562****stainless steel lunchbox with bamboo lid**

Durable lunch box made of stainless steel with a lockable (double-sided clamping bracket) lid made of bamboo and a capacity of 1,000 ml. Your advertising will be engraved on the lid.

❏ 18,2 × 12,1 × 5,8 cm | 📐 L3 6 × 4 | 🏠 KS



03



07



77



FOOD SAFE EXPRESS

81155**Aluminum lunch box with closure**

Long-lasting and environmentally friendly aluminum snack / lunch box with two clamps for safe transport. Your advertising will be engraved on the top.

❏ 17,2 × 11,6 × 5,3 cm | 📐 L3 5 × 5 | 🏠 KS



FOOD SAFE 920 ml EXPRESS

88489**Lunch box with carrying handle**

You can effortlessly carry your food with this stainless steel lunch box (600ml capacity) with practical handle - it will stay warm for a long time thanks to its double-walled isolation. The transparent compartment at the bottom offers further storage space for other food (320ml capacity). Your logo will be engraved.

❏ 12,5 × 19,5 cm | 📐 L3 5 × 3 | 🏠 K





FOOD SAFE

80975

Small bowls set with slate board

4-piece bowl set consisting of 3 serving bowls (bamboo,pp) and 1 slate plate. We will engrave your logo on the plate.

☒ 25 x 10 x 5,7 cm | ☒ L3 4 x 1 | ☒ K



FOOD SAFE ECO EXPRESS

82296

Wooden Tea-Box with Glass Lid

Wooden Store-Box for up to 40 tea bags with Glass Lid and divided compartments. Your Logo will be engraved onto the Box.

☒ 15 x 15 x 8,4 cm | ☒ L3 6 x 4 | ☒ K



FOOD SAFE ECO EXPRESS

80794

Small bowls set with bamboo board

4-piece bowl set consisting of 3 serving bowls (bamboo,pp) and 1 bamboo board. We will engrave your logo on the board.

☒ 24,9 x 9,8 x 6 cm | ☒ L3 4 x 1 | ☒ K





FOOD SAFE ⚡ EXPRESS

EXCL. 4 UM3
BATTERY**80689****Electric pepper mill**

Electric pepper mill in stainless steel and ceramic grinder. Your logo will be engraved.

⌀ 5,2 × 22,3 cm | L3 3,5 × 3,5 | K



FOOD SAFE ECO ⚡ EXPRESS

81563**Salt and pepper mill**

Salt and pepper mill in coated stainless steel, with bamboo lid, and ceramic grinders. Your logo will be engraved on the lid.

⌀ 11 × 5,4 × 15,5 cm | L3 3 × 3 | K



FOOD SAFE ⚡ EXPRESS

EXCL. 6 UM3
BATTERY**80337****Electric salt and pepper mill**

Electric salt and pepper mill, the two halves can be operated with 2 separate buttons. Your logo will be engraved on the base.

⌀ 6,2 × 17,2 cm | L3 3 × 1,5 | K



FOOD SAFE

81587**Spice mill**

This mill has a high-quality glass housing with 150ml capacity, and a durable ceramic grinding mechanism. We will print your logo on the top.

⌀ 6,5 × 13,2 cm | T3 ⌀ 3,5 | K





FOOD SAFE ECO EXPRESS

82566

stainless steel lunchbox with bamboo lid

Durable lunch box made of stainless steel with a lockable (double-sided clamping bracket) lid made of bamboo and a capacity of 1,000 ml. Your advertising will be engraved on the lid.

✂ 8,2 x 31,5 cm | 田 L3 3,5 x 3,5 | 田 K



FOOD SAFE ECO

82585

Bamboo cutlery set

Environmentally friendly bamboo cutlery, consisting of a fork, a knife and a spoon in a cotton bag. Suitable for camping or other outdoor activities. The advertising is printed on the pocket.

✂ 6,5 x 1,5 x 21,5 cm | 田 TT1 3 x 10 | 田 N



FOOD SAFE ECO EXPRESS

82525

Wooden spoon

Wooden spoon, a sustainable and durable all-purpose weapon in every kitchen. The advertising engraved onto the handle.

✂ 30,2 x 4,1 x 0,9 cm | 田 L1 6 x 0,6 | 田 N





FOOD SAFE ECO EXPRESS

82307**Bamboo cutting Board**

Bamboo cutting Board with rounded down edges and a silicone ring to carry or hang up. Your Logo will be engraved onto the board.

❄️ 24,8 × 17,9 × 1 cm | 📏 L3 5 × 3 | 🏠 KS



FOOD SAFE ECO EXPRESS

EXCL. 2 UM4
BATTERY**82442****Digital Bamboo Kitchen Scale**

Digital Bamboo kitchen scale with black display. Loading weight is 5 kg and notifications can be shown in kg/g/oz/ml up to 1 g precise. Your Logo will be engraved on the Bamboo surface.

❄️ 16,1 × 23 × 1,9 cm | 📏 L3 5 × 3 | 🏠 K



FOOD SAFE ECO EXPRESS

82523**Set of 3 cutting boards**

Set of three different sized bamboo cutting boards with rounded corners and a hole each. Your logo will be engraved on one of the boards.

❄️ 33 × 23,7 × 3 cm | 📏 L3 6 × 4 | 🏠 N





FOOD SAFE ECO EXPRESS

80191

Cheese set with wooden cutting board

Cheese set in a sturdy cardboard gift box, includes a round wooden board and a cheese knife made of stainless steel. We will engrave your logo on the board.

20,8 x 21,7 x 3 cm | L3 8 x 3 | K



FOOD SAFE ECO

82447

4-Pieces Cheese Set

4-Pieces cheese set in a sustainable packed cardboard with 4 different cheeseknives- and forks with wooden handles. Your logo will be printed on the cardboard.

17 x 19,6 x 1,9 cm | T3 4 x 3 | KS



FOOD SAFE ECO EXPRESS

82512

Chopping board made of wood

Chopping board made of wood with three different cheese cutlery. By simply sliding it open, you can easily take out the cheese knives, and every piece is optimally stored. We will engrave your logo on the board.

22 x 3,8 cm | L3 8 x 3 | K



FOOD SAFE ECO EXPRESS

80836

Wooden board with cheese knife

Cheese set in an environmentally friendly packaging, consisting of a wooden board with leather hanger and a cheese knife made of stainless steel. We will engrave your logo on the board.

25,7 x 28 x 2,7 cm | L3 3 x 3 | K





FOOD SAFE ECO EXPRESS

80190

Cheese set with slate cutting board

Cheese set in a sturdy cardboard gift box, with one slate cutting/presentation plate, one small and one flat cheese knife, and one cheese fork made of stainless steel. We will engrave your logo on the plate.

33,5 × 28,5 × 2,8 cm | L3 8 × 4 | K



FOOD SAFE ECO EXPRESS

80558

Serving Board, slate/wood

Bamboo serving board with a slate plate. There is a holder for drinks on the plate as well as a circulating drainage channel. We will engrave your advertising on the plate.

40 × 25 × 1,5 cm | L3 4 × 2 | K



FOOD SAFE

80560

Pizza set

2-pieces pizza set consisting of a rolling knife and a regular knife, both with plastic handle and stainless steel cutting edge. There is a delicious pizza recipe printed inside the environmental friendly packaging. We will print your advertising on the box.

16,8 × 2,5 × 25,5 cm | T3 4 × 3 | K





FOOD SAFE 104 ml ⚡ EXPRESS

65708

Stainless steel hip flask

Stainless steel hip flask with a security screw cap and 104 ml content. Your logo will be engraved.

7 × 2,5 × 11,6 cm | L3 4 × 3 | K



FOOD SAFE 237 ml ⚡ EXPRESS

65703

Stainless metal hip flask

Stainless steel hip flask with a security screw cap and 237 ml content. Your logo will be engraved.

9,3 × 2,8 × 13,8 cm | L3 5 × 3 | K



FOOD SAFE 170 ml

62439

Stainless Steel Hip Flask with wooden Coating

Stainless Steel Hip Flask with wooden Coating. Safety screw mechanism and a capacity of 170 ml. Your Logo will be printed on the coating.

9,5 × 2 × 9,5 cm | T3 4 × 3 | K



FOOD SAFE 178 ml + 2 × 45 ml
⚡ EXPRESS

60168

Hipflask set with 2 cups

Stainless steel hipflask set with 2 liquor cups. Your logo will be engraved.

18,8 × 17 × 4,4 cm | L3 4 × 2,5 | K



FOOD SAFE 45 ml × 4 ⚡ EXPRESS

65740

4 stainless steel caps

Set of 4 small liquor cups made of stainless steel in a practical case. We will engrave your logo on the cups.

ø 4,3 × 6,9 cm | L3 1 × 3 | K





FOOD SAFE ⚡ EXPRESS

82870

Double Wall Stainless Steel Wine Cooler

Wine cooler made of high-quality, double-walled stainless steel. Keeps cool for a long time without ice cubes and is appropriate for all popular bottle sizes. Your logo will be engraved.

❏ 13,5 × 17,7 cm | ❏ L3 5 × 3 | 田 K



FOOD SAFE

88673

Bottle cooler with cooling pads

This elegant bottle cooler in black, with velcro fastener and integrated cooling gel pads, makes cooling of all kind of bottles very easy. We will print your logo on a segment.

❏ 30 × 18,5 × 1,5 cm | ❏ S1 12 × 2 | 田 N



FOOD SAFE

88378

Plastic wine rack for three bottles

This frosted plastic wine rack provides space for three bottles and fits even into the smallest flat thanks to its comfortable size, includes screws and instruction manual. We will print your logo on the rack.

❏ 17 × 15,2 × 35,5 cm | ❏ T4 5 × 1 | 田 K



FOOD SAFE 500 ml ⚡ EXPRESS

84021

3-piece cocktail set

3-piece chromed cocktail set in a brown box*. Your logo will be laser engraved.

❏ 27,2 × 24,1 × 9,3 cm | ❏ L3 4 × 2 | 田 K





FOOD SAFE ⚡ EXPRESS

81526

Corkscrew

Air pressure corkscrew - opening a wine bottle has never been so easy. Push the tip of the corkscrew into the cork and hold the lid tight, pump air 7-8 times into the bottle and the cork will pull itself out of the bottle neck. Your advertisement will be engraved on the handle.

✂️ Ø 4,6 x 19,3 cm | 📐 L3 5 x 1 | 🌿 K



FOOD SAFE ⚡ EXPRESS

82883

Vacuum champagne stopper

High pressure champagne stopper with metal clamp - through high pressure the carbon dioxide remains in the bottle. On top of the stopper you can settle the exact date on which the bottle is put in the refrigerator. Your advertising will be engraved.

✂️ Ø 4 x 7,5 cm | 📐 L3 2 x 1 | 🌿 K



FOOD SAFE ⚡ EXPRESS

82865

Waiter's knife

Metal waiter's knife with bottle opener, foil cutter and corkscrew with 2 lifting levels. We will engrave your advertising on the black surface.

✂️ 11,9 x 1,4 x 2 cm | 📐 L2 4 x 0,7 | 🌿 K



FOOD SAFE 🌿 ECO ⚡ EXPRESS

81465

Bamboo-metal bottle opener

Large stainless steel bottle opener with one bamboo side on which your logo will be engraved.

✂️ 17,8 x 4 x 0,5 cm | 📐 L2 5 x 2,5 | 🌿 K





FOOD SAFE ⚡ EXPRESS

60786

Playset with hip flask, chess and card game

Playset with hip flask (237ml filling capacity), 2 snaps, 5 dice, a chess and a card game in a wooden box. Your advertising will be laser engraved on the hip flask.

❏ 24 × 18 × 6 cm | ☒ L3 4,8 × 2,8 | ☒ N



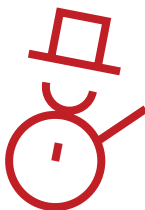
FOOD SAFE ⚡ EXPRESS

80360

Wine set in a wooden barrel

Wine set in a little wooden barrel comes with a waitersknife, a pourer with stipper, one stirrer and a foil cutter. All you need to celebrate wine. You logo will be engraved onto the barrel.

❏ 13,1 × 7,3 × 14,2 cm | ☒ L3 9 × 1,5 | ☒ K



FOOD SAFE

84037

Wine set in wooden box

Luxurious 4-piece wine set in a nice wooden box* including chess game. The box includes a metal waiter's knife, bottle cap, drop ring, and wine thermometer. We will print your logo on the lid of the case.

❏ 15 × 17,5 × 4,7 cm | ☒ S2 5 × 1 | ☒ K



FOOD SAFE

84007

Wine set in wooden box

Wooden wine box* with integrated waiter's knife, bottle cap, spout, and drop ring. An additional wooden partition wall provides more stability to the wine bottle. We will print your logo on the lid of the case.

❏ 36 × 11,1 × 12,2 cm | ☒ S2 6 × 4 | ☒ K





FOOD SAFE 2 x 200 ml

80797

Set of 2 double-walled capuccino cups

Double-walled capuccino cups made of glass, you won't burn your fingers and your capuccino will stay warm! Your logo will be printed on the glass.

Ø 8,5 x 11 cm | C1 5 x 2,5 | K



FOOD SAFE 2 x 100 ml

80796

Set of 2 double-walled espresso cups

Double-walled espresso cups made of glass, you won't burn your fingers and your espresso will stay warm! Your logo will be printed on the glass.

Ø 6,2 x 5,8 cm | C1 3 x 2 | K





FOOD SAFE 500 ml ECO EXPRESS

81536

Double-walled glass with 500 ml filling capacity

Double-walled cup with 500 ml filling capacity and lockable lid in bamboo. We will engrave your logo on the lid.

Ø 8,7 × 15 cm | L 3 × 3 | K



FOOD SAFE 350 ml ECO EXPRESS

81537

Double-walled glass with handle and 350 ml filling capacity

Double-walled glass with handle, 350 ml filling capacity and lockable bamboo lid on which your logo will be engraved.

Ø 9,1 × 11 cm | L 3 × 3 | K



FOOD SAFE 150 ml ECO EXPRESS

82359

Bamboo Tray with Spoon and Glass Mug

Bamboo Tray with Bamboo Spoon, Glass Mug and a slot for sugar or chocolate et cetera. Your Logo will be engraved onto the Board.

16,4 × 8,1 × 8,4 cm | L 3,5 × 2 | K





FOOD SAFE 1000 ml ECO

62306

Glass Carafe with cork lid

Glass carafe with cork lid and a capacity of 1.000 ml. Your Logo will be printed onto the carafe.

Ø 9,5 x 28,2 cm | C1 5 x 5 | K



FOOD SAFE 1350 ml EXPRESS

80798

Glass carafe

Glass carafe with stainless steel cap and 1350 ml capacity. The cap has 2 different openings: a sieve and a large opening. Your logo will be laser engraved.

Ø 11 x 24,7 cm | L3 5 x 5 | K



FOOD SAFE 320 ml

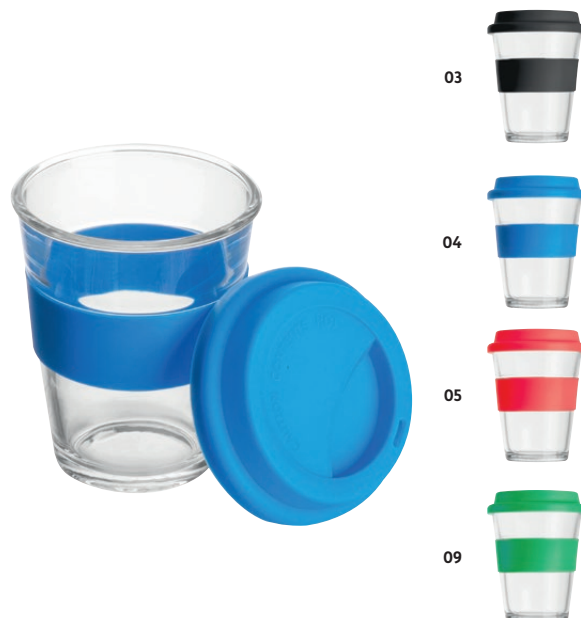
80948

Glass cup, 320 ml

Glass cup with 320ml filling capacity and extra sturdy handle. Your logo will be branded via ceramic transfer.

Ø 8,1 x 10,2 cm | C1 5 x 5 | N





FOOD SAFE 250 ml

82340

Glass Mug with colored Handle

Glass Mug with colored Handle and a Capacity of 250 ml. Your Logo will be printed onto the Mug.

Ø 7 × 10,1 cm | C1 5 × 5 | K

FOOD SAFE 1000 ml ECO EXPRESS

62572

Glass mug with silicone sleeve and lid

Glass drinking cup with a capacity of 300 ml, silicone lid and matching silicone sleeve. Your advertising will be engraved on the cuff.

Ø 9,8 × 12,2 cm | L3 3 × 1,5 | K



FOOD SAFE 300 ml

83331

Coffee mug made of glass

Glass mug for any kind of drinks with a 300ml capacity. Your message is a highlight on this mug, it will be printed with ceramic transfer.

Ø 7,9 × 9,5 cm | C1 10 × 6 | N



FOOD SAFE 300 ml

87981

Coffee mug, transparent frosted

Coffee mug transparently frosted in white (300 ml). This coffee mug is a must on every desk. We will print your logo on the mug.

Ø 8 × 9,4 cm | C1 6 × 6 | N





**3500+
WASHING
CYCLE**

SGS



FOOD SAFE 300 ml

81277

Classic coffee mug for allover print

Sublimation mug (plastic-laminated ceramics) with 300ml capacity in classical style. Your advertising is printed all over the mug with sublimation print.

☒ ø 8,2 × 9,9 cm | ☒ SU 19 × 8 | ☒ N



FOOD SAFE 300 ml

80171

Metallic finish mug

Classic coffee mug in a metallic finish with 300ml capacity. This mug will be decorated with sublimation transfer. The color mix is CMYK - due to the color of the mug the print result could turn different, we suggest to print in dark grey.

☒ ø 8,1 × 10 cm | ☒ SU 18,5 × 8 | ☒ N



FOOD SAFE 300 ml

83438

Colour changing mug

Effective sublimation mug: when cold the imprint vanishes under the coloured lacquering. As soon as hot liquid is filled in, the coloured imprint appears. Your advertising is printed all over the mug, even photo prints are possible.

☒ ø 8,2 × 9,6 cm | ☒ SU 19 × 8 | ☒ N





FOOD SAFE 300 ml

80481

Ceramic mug

Nice shaped ceramic mug (300ml). We will place your advertising with ceramic transfer.

12,3 x 8,6 x 10,5 cm | C1 4 x 4 | N



FOOD SAFE 300 ml

87888

Ceramic coffeemug

Classical coffee mug made of glossy ceramic with a capacity of 300ml. You can order a single box* for this item (item number 87888v). Your logo will be printed via ceramic transfer on the mug.

8 x 9,5 cm | C1 4 x 3 | N



FOOD SAFE 300 ml

81557

Ceramic cup with black rim

Nostalgia sublimation cup made of ceramic with black rim and 400 ml filling capacity. Your advertisement will be printed via sublimation.

9,9 x 9,5 cm | SU 20 x 6 | P



FOOD SAFE 300 ml

80097

Ceramic mug

Ceramic mug with 300ml capacity. We add a ceramic transfer with your logo to the mug.

9 x 8,5 cm | C1 7 x 6 | N





FOOD SAFE 300 ml

80095

Ceramic coffee mug

Classic coffee mug with 300ml capacity - made of shiny ceramic. You can order a single box per mug on request. Your logo will be printed via ceramic transfer on the mug.

Ø 8 × 9,5 cm | C1 4 × 3 | N



FOOD SAFE 350 ml ECO

82418

Ceramic Mug with Cork Ground

350 ml Ceramic Mug with Cork Ground. Your Logo will be printed onto the mug.

Ø 8,6 × 11,3 cm | C1 4 × 4 | K



FOOD SAFE 350 ml

80843

Ceramic cup, 350ml

Nostalgia ceramic cup with 350ml filling capacity. Your logo will be printed via ceramic transfer.

Ø 8,9 × 8,2 cm | C1 5 × 5 | N



FOOD SAFE 300 ml

88704

Ceramic cup, white inside and coloured outside

Ceramic cup with a capacity of 300ml and coloured outer part in many nice colours. Your logo will be printed via ceramic transfer on the mug.

Ø 9 × 8,5 cm | C1 4 × 4 | N





04



08



09



03



05



FOOD SAFE 300 ml EXPRESS

80654

Rubberized ceramic mug

Ceramic mug with rubberized coating in different colors, and 300 ml capacity. We will engrave your logo onto the mug.

8,4 x 9,2 cm | L3 4 x 3 | K + P



05



03



08



09



04



FOOD SAFE 300 ml EXPRESS

80655

Rubberized ceramic mug

300 ml ceramic mug with rubberized surface in different colors, ideal for laser engraving. We will engrave your logo onto the mug.

8 x 10,5 cm | L3 4 x 3 | K





✂ Ø 6,5 x 23 cm | 🖼 L3 2 x 7 | 🗪 K



✂ 7 x 24,7 cm | 🖼 T4 3 x 3 | 🗪 P



✂ 6,5 x 19,6 cm | 🖼 L2 Ø 3 cm | 📐 K





FOOD SAFE 500 ml EXPRESS

61394

Transparent drinking bottle with grey lid

Drinking bottle made of glass with grey leak-proof lid and a 500 ml filling capacity. Your advertisement will be engraved on the lid.

Ø 6,1 × 21,9 cm | L2 Ø 3,5 | K



FOOD SAFE 300 ml 2h+ 6h+

60985

Drinking bottle with neoprene sleeve

Transparent drinking bottle made of glass, with neoprene sleeve, closing lid, carrying strap, and 300ml capacity. Your advertisement will be printed on the neoprene sleeve.

Ø 5,8 × 17,2 cm | TT1 5 × 5 | K



FOOD SAFE 1000 ml

62427

1000 ml Glass Bottle with neoprene Sleeve

Leakproof Drinking Bottle made from Glass with neoprene Sleeve, Loop and a capacity of 1000 ml. Your Logo will be printed onto the Sleeve.

Ø 8,5 × 24,5 cm | TT1 10 × 4 | K





FOOD SAFE 300 ml VACUUM EXPRESS

62577

Vacuum stainless steel drinking cup

Vacuum stainless steel drinking cup with transparent lid with sliding drinking bar. Capacity 300 ml. Your advertisement will be engraved on the cup.

Ø 8,8 × 8,5 cm | L 3 4 × 4 | K



FOOD SAFE 380 ml VACUUM EXPRESS

62544

Double-walled drinking cup

Double-walled vacuum drinking cup made of stainless steel with a capacity of 380 ml and a transparent drinking cap. Your logo will be engraved on the mug.

Ø 8 × 11,2 cm | L 3 4 × 3 | K



FOOD SAFE 380 ml VACUUM EXPRESS

62522

Double walled vacuum mug

Double-walled vacuum drinking cup with a capacity of 380 ml and a transparent drinking cap, made of stainless steel. Your advertising will be engraved on the mug.

Ø 8 × 11,2 cm | L 3 4 × 3 | K





FOOD SAFE 450 ml 1h⁺ 1.5h⁺ EXPRESS

60546**Drinking mug 450ml**

Ergonomic drinking mug made of stainless steel. This mug has a 450ml filling capacity, leakproof lid, and a non-slip grip zone. Your advertising will be printed above or below the grip.

Ø 8 × 18,5 cm | T4 3 × 4 | K



FOOD SAFE 400 ml 2h⁺ 3h⁺ EXPRESS

60348**Double wall stainless steel drinking bottle**

Double walled stainless steel travel mug (400 ml) – white outer side, and stainless steel inner side. The black screw drinking top is leakproof. Ceramic transfer or engraving on request.

Ø 8,5 × 17,5 cm | L3 5 × 5 | K

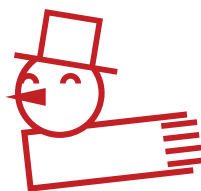


FOOD SAFE 400 ml EXPRESS

65612**"Stay Hot" travel mug**

Stay hot stainless steel travel mug with 0.4L capacity and 12 V car power facility for long journeys. Your logo will be engraved.

Ø 8,6 × 16,2 cm | L3 5 × 5 | K



BPA FREE

FOOD SAFE 400 ml 1h⁺ 1.5h⁺ EXPRESS

65300**Stainless steel travel mug**

Double-walled stainless steel travel mug with sliding ledge on the lid and 0.4L capacity. Your logo will be engraved, ceramic transfer on request.

Ø 8,7 × 16 cm | L3 5 × 5 | K





⚡ EXPRESS

🍴 FOOD SAFE 📏 750 ml 🏠 VACUUM ⏱ 8h⁺ ❄ 12h⁺

61519**Premium drinking bottle 500 ml**

Leakproof, double-walled premium drinking bottle made of stainless steel with M-Powder coating, lockable screw cap and 500 ml filling capacity. Your logo will be engraved onto the bottle.

❄ ø 7,2 x 22,5 cm | 📏 L3 4 x 4 | 🏠 K



⚡ EXPRESS

🍴 FOOD SAFE 📏 500 ml 🏠 VACUUM ⏱ 6h⁺ ❄ 9h⁺

61518**Leakproof coffee mug**

Leakproof premium coffee cup made of stainless steel with M-Powder coating, transparent lid, closable drinking opening and 500 ml filling capacity. Dishwasher safe! Your advertising will be engraved onto the cup.

❄ ø 8,5 x 18,1 cm | 📏 L3 4 x 4 | 🏠 K



04



77

⚡ EXPRESS

🍴 FOOD SAFE 📏 400 ml 🏠 VACUUM ⏱ 8h⁺ ❄ 12h⁺

68799**Drinking mug made of stainless steel, double-walled**

Elegant drinking mug, which can be opened and closed by a push button on the lid. The mug has a capacity of 0.4L and is made of high-quality stainless steel inside and outside. Your logo will be engraved.

❄ ø 8 x 20 cm | 📏 L3 5 x 5 | 🏠 K

⚡ EXPRESS

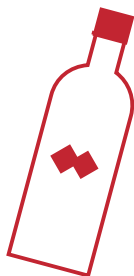
🍴 FOOD SAFE

61485**Mug with pattern**

Double-walled, leak-proof vacuum drinking cup made of stainless steel with closable drinking opening and 300 ml capacity. Your logo will be engraved on the mug.

❄ ø 8 x 16,5 cm | 📏 L3 5 x 5 | 🏠 K





⚡ EXPRESS

🍴 FOOD SAFE 📏 500 ml 📏 VACUUM ⏱ 24h+ ❄ 36h+

61199**Vacuum drinking bottle**

Stainless steel drinking bottle with leak-proof vacuum seal, a straight grip zone and a filling capacity of 500 ml. Your advertisement will be engraved onto the grip.

📏 7,5 x 25,5 cm | 📏 L3 2 x 5 | 📏 K



03



07

⚡ EXPRESS

🍴 FOOD SAFE 📏 500 ml 📏 VACUUM ⏱ 24h+ ❄ 36h+

60983**Stainless steel drinking bottle**

500ml drinking bottle made of stainless steel, with carrying handle and silicone closure. We will engrave your logo on the bottle.

📏 7 x 22 cm | 📏 L3 4 x 4 | 📏 K



03



98



⚡ EXPRESS

🍴 FOOD SAFE 📏 500 ml 📏 VACUUM ⏱ 24h+ ❄ 36h+

62573**Double wall vacuum bottle**

Double-walled vacuum bottle made of stainless steel with a leak-proof closure and a capacity of 500 ml. Your advertising will be engraved on the bottle.

📏 7 x 24,7 cm | 📏 L3 4 x 4 | 📏 K





⚡ EXPRESS

 FOOD SAFE 1000 ml VACUUM 24h⁺ 36h⁺
**65401**

Stainless steel thermal flask

Double-walled stainless steel thermal flask with 1L capacity, fast closure, and metal cup. Your logo will be engraved.

Ø 8,5 × 31 cm | L3 4 × 4 | 田 K



⚡ EXPRESS

 FOOD SAFE 500 ml VACUUM 24h⁺ 36h⁺
**65403**

Stainless steel thermal flask

Double-walled stainless steel thermal flask with 0.5L capacity, fast closure, and metal cup. Your logo will be engraved.

Ø 7,4 × 24,7 cm | L3 4 × 4 | 田 K



29



10



11



12

⚡ EXPRESS

 FOOD SAFE 500 ml VACUUM 24h⁺ 36h⁺
**62892**

Thermos flask

Double-walled thermal flask with 500 ml capacity, fast stopper and metal cup in trendy colours. We will engrave your advertising on the flask.

Ø 7 × 23,5 cm | L3 4 × 4 | 田 K



04



05



03

⚡ EXPRESS

 FOOD SAFE 500 ml VACUUM 24h⁺ 36h⁺
**65420**

Stainless steel thermal flask

Stainless steel thermal flask with 0.5L capacity and coloured matt coating. Your logo will be engraved.

Ø 7 × 24 cm | L3 5 × 5 | 田 K





FOOD SAFE 550 ml 24h+ 36h+ EXPRESS

62414

Vacuum Stainless Steel Drinking Bottle

Vacuum, Leakproof Drinking Bottle made from Stainless Steel with carrying handle and a capacity of 550 ml. Your Logo will be engraved onto the bottle.

Ø 7,3 × 23,7 cm | L3 4 × 4 | K



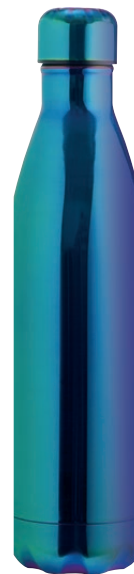
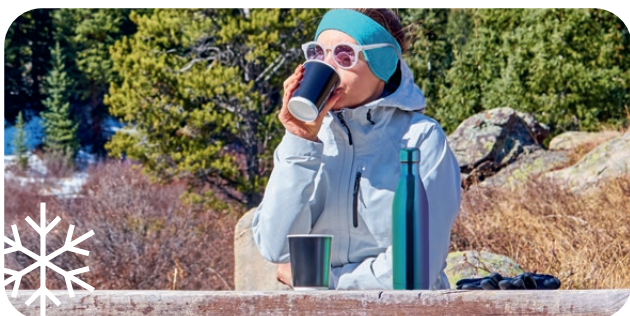
FOOD SAFE 450 ml 8h+ 12h+ EXPRESS

62142

Double-walled vacuum drinking bottle

Double-walled vacuum bottle with cork bottom, insert strainer and a capacity of 450 ml. Your logo will be engraved onto the bottle.

Ø 6,5 × 24,9 cm | L3 4 × 4 | K



EXPRESS

FOOD SAFE 800 ml VACUUM 24h+ 36h+

60196

Stainless steel drinking bottle

Colourful stainless steel drinking bottle (800ml) of course leakproof - every bottle is unique, because the colours are slightly different. Your logo will be laser engraved.

Ø 8 × 31,5 cm | L3 5 × 5 | K





⚡ EXPRESS

🍷 FOOD SAFE 📏 500 ml 📏 VACUUM ⌚ 24h+ ❄️ 36h+

60430

Stainless steel thermal flask

Stainless steel vacuum flask (500ml) with the perfect design drinking mug. Your advertising will be laser engraved onto the bottle.

📏 7 x 25,2 cm | 📏 L3 5 x 5 | 📏 K + P



⚡ EXPRESS

🍷 FOOD SAFE 📏 450 ml 📏 VACUUM ⌚ 6h+ ❄️ 9h+

61554

Drinking bottle with LED display

Stainless steel vacuum flask with thermometer, simply touch and the temperature is displayed on the lid. Your advertising will be engraved on the bottle.

📏 6,3 x 23,3 cm | 📏 L3 4 x 4 | 📏 K



06

03

🍷 FOOD SAFE 📏 310 ml ⌚ 4h+ ❄️ 6h+ ⚡ EXPRESS

61545

Thermos flask 310 ml

Leak-proof, slim stainless steel thermos flask with a 310 ml filling capacity. Your advertising will be engraved.

📏 4,8 x 25 cm | 📏 L3 5 x 2 | 📏 K





FOOD SAFE 600 ml EXPRESS

61512**Aluminium drinking bottle 600 ml**

Aluminum bottle with lockable lid and a 600 ml capacity. Your logo will be engraved.

Ø 6,3 × 23,4 cm | L 3 4 × 4 | K



FOOD SAFE 750 ml EXPRESS

61514**Drinking bottle 750 ml**

Metal drinking bottle with lockable lid and 750 ml filling capacity. Your logo will be engraved.

Ø 5,8 × 21 cm | L 3 4 × 4 | K



FOOD SAFE 500 ml 9h⁺ 12h⁺ EXPRESS

61509**Thermos flask with wooden cap 500 ml**

Noble, double-walled flask made of stainless steel, with a 500 ml filling capacity and wooden closure. Your logo will be engraved.

Ø 7,3 × 25,5 cm | L 3 4 × 4 | K



EXPRESS

FOOD SAFE 500 ml VACUUM 24h⁺ 36h⁺

60089**Stainless steel thermal flask**

Double-walled thermal flask with 500 ml capacity, fast stopper, and metal cup. We will laser engrave your logo onto the flask.

Ø 7 × 23,3 cm | L 3 5 × 5 | K





⚡ EXPRESS

🍴 FOOD SAFE 📏 500 ml 🌱 ECO ⏱ 8h+ ❄ 12h+ 🏠 VACUUM

62334

Double walled vacuum Bottle

Double walled vacuum drinking bottle made of Stainless Steel with Hand Loop, bamboo coating and a capacity of 500 ml. Your Logo will be engraved onto the bottle.

📏 6,4 x 27,3 cm | 📦 L3 4 x 4 | 🏠 K



🍴 FOOD SAFE 📏 400 ml 🌱 ECO ⏱ 4h+ ❄ 8h+ ⚡ EXPRESS

60926

Bamboo mug

Stainless steel drinking mug with bamboo sheathing, drinking sliding bar, and 400ml capacity. Your logo will be engraved on the sheath.

📏 8 x 17,5 cm | 📦 L3 4 x 3 | 🏠 K



🍴 FOOD SAFE 📏 300 ml 🌱 ECO ⏱ 6h+ ❄ 9h+

92429

Bamboo Items Set

Sustainable Bamboo Set consisting of a 8.000 mAh Power-bank, 300 ml Drinking Bottle made of Stainless Steel with tea strainer and bamboo looking sunglasses. Your Logo will be printed on the box.

📏 25,5 x 26,2 x 7,5 cm | 📦 S1 15 x 15 |



⚡ EXPRESS

🍴 FOOD SAFE 📏 350 ml 🌱 ECO ⏱ 6h+ ❄ 9h+

61667

Stainless steel mug with tea strainer in bamboo look 350ml

Drinking cup made of stainless steel with a bamboo coating, sieve, stainless steel cap and a capacity of 350ml. We engrave your advertising on the bamboo surface.

📏 6,5 x 19,6 cm | 📦 L3 3 x 3 | 🏠 K





FOOD SAFE 600 ml ECO

62580

RPET bottle with bamboo lid

Drinking bottle made of PET with a lockable lid made of bamboo and a capacity of 600 ml. Your advertising will be printed on the bottle.

Ø 7 × 20,5 cm | T4 3,5 × 4 | K



FOOD SAFE 500 ml ECO

62335

Glass Bottle with Bamboo Lid and Jute Cover

Leakproof Glass Bottle with Bamboo Lid, Jute Cover, Loop and a capacity of 500 ml. Your Logo will be printed on the middle of the jute cover.

Ø 6,7 × 22,5 cm | TT1 10 × 4 | K



FOOD SAFE 420 ml ECO VACUUM 4h+ 8h+

61343

Glass bottle with bamboo lid and 420 ml capacity

Double-walled vacuum glass bottle with bamboo lid, sieve insert for tea or fruits and 420 ml capacity. Your logo will be engraved on the lid.

Ø 7 × 23,8 cm | L3 4 × 4 | K



FOOD SAFE 400 ml 6h+ 9h+

62879

Double wall glass bottle, leakproof

Double-walled glass bottle with sieve and 400 ml capacity. Your advertising will be printed via ceramic transfer on the glass.

Ø 6,7 × 22,8 cm | C1 5 × 2,5 | K





03



04



06



05

60954

Cosmetic bag

Cosmetic bag with faux leather applications and zipper for closing. Your advertising is printed on the front.

27,5 x 6,5 x 13,5 cm | S1 15 x 5 | P



62354

Sublimation Cosmetic Bag

Cosmetic Bag made from Polyester with Zipper and big advertising space on both sides. Your Logo will be printed by Sublimation onto the Bag.

22,2 x 5,2 x 15 cm | SU 22 x 14 | N



52011

Luxury bathroom set

High-quality polyester toilet bag with a metal hook and several compartments. We will print your logo on the bag.

20 x 7 x 25 cm | S1 10 x 5 | P



06



03

74012

CrisMa manicure set

6-piece luxurious CrisMa manicure set with stainless steel instruments. We will print your logo on the case.

15 x 7,7 x 1,9 cm | T4 5 x 2 | K





ECO ⚡ EXPRESS

72430**Bamboo Toothbrush**

Sustainable Bamboo Toothbrush with nylon brush and bamboo handle, single packed in a cardboard box. Your Logo will be engraved on the Handle.

✂ 19,5 x 2 x 1,5 cm | 📏 L1 4 x 0,8 | 🌱 K

ECO ⚡ EXPRESS

EXCL. 3 UM4 BATTERY

72446**Digital Bamboo Person Scale**

Digital Bamboo person scale with a loading weight of 150 kg and the notifications can be shown in kg/lb/st. Your Logo will be engraved on the scale.

✂ 28 x 28 x 2,9 cm | 📏 L3 5 x 3 | 🌱 K



ECO ⚡ EXPRESS

72265**Metal double mirror with cork coating**

Metal Double Mirror with cork Coating. Inside is a normal and a magnification mirror. Your Logo will be placed onto the cork coating.

✂ 7 x 1,8 cm | 📏 L2 0 4 | 🌱 K

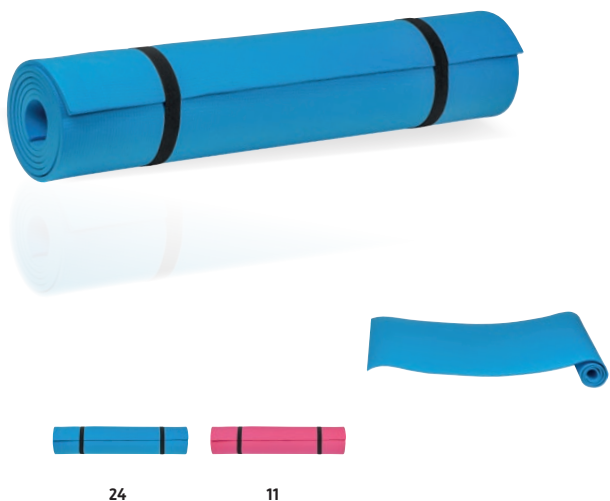
⚡ EXPRESS

70424**Pocket double mirror**

Unbreakable double mirror - how? Made from polished metal. The view is bright - regular on one side, magnified on the other. The white cover outside makes it perfect looking. Your logo will be laser engraved.

✂ 5,8 x 6 x 1 cm | 📏 L3 4 x 4 | 🌱 K + P





24

11

52511**Yoga mat**

EVA yoga mat with elastic band to close. Suitable for indoor and outdoor use, can also be used as a sports, pilates, gymnastics or fitness mat. Your advertising will be lasered onto the mat.

❏ 60 x 175 x 0,5 cm | ❏ L3 6 x 3 | ❏ P



🍷 FOOD SAFE 🍷 2200 ml 🍷 BPA FREE

60807**Fitness dumbbell drinking bottle**

Large fitness water bottle made of plastic with a 2200 ml capacity. The bottle can be filled through the integrated handle and used as a dumbbell. We will print your logo on the front.

❏ Ø 12,5 x 26 cm | ❏ T4 4 x 4 | ❏ K



77

04

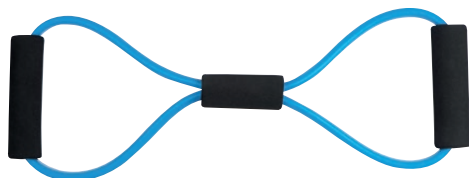
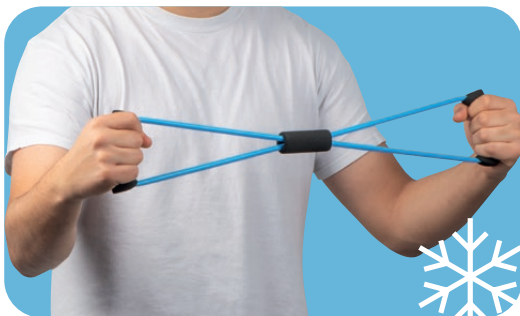
05

60388**High-Quality Sportsbag**

The perfect sports bag - HQ 1680D Material. This bag is perfect for your sport clothes. The compartment on the side is perfect for shoes or wet clothes - the inner compartment is huge and the front one is perfect for quick access. Your advertising will be printed on the front pocket.

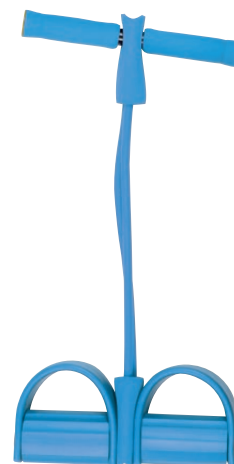
❏ 58 x 28 x 32 cm | ❏ TT3 12 x 7 | ❏ P



**⚡ EXPRESS****52467****Fitness Expander**

Versatile Fitness expander with soft grip which is perfect for every workout. Your Logo will be engraved on the middle part.

✂ 39 x 3 x 13,5 cm | 📏 L3 5 x 1 | 🏠 P

**52471****Abs- & Backtrainer**

Abs- and Backtrainer with soft touch handles and feet fixture for a strong workout. Your Logo will be printed on one handle.

✂ 25,5 x 4,7 x 52 cm | 📏 T4 4 x 2 | 🏠 P

**51172****Skipping rope with metal handles**

Professional skipping rope with ball bearings for fast rotations, individually adjustable length, and high-quality stainless steel handles. We engrave your advertising on a handle.

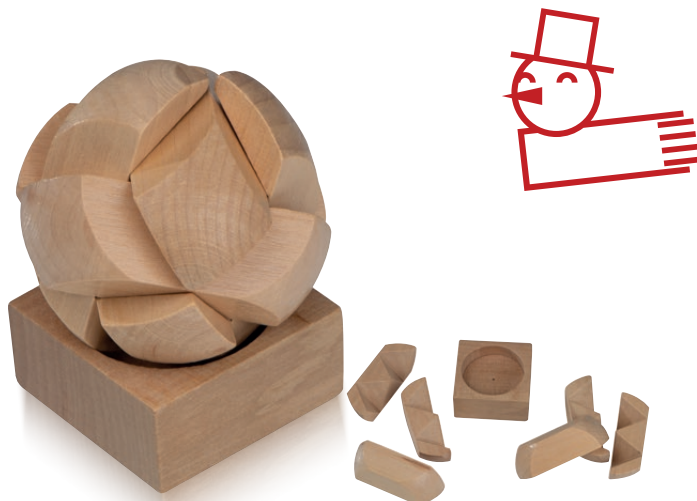
✂ adjustable | 📏 L2 2,5 x 1 | 🏠 K

52424**Elastic Fitness straps**

Elastic fitness straps inside a case. The workout can be done now everywhere. Your Logo will be printed onto the box.

✂ 13 x 6,9 x 2,4 cm | 📏 T3 5 x 3 | 🏠 N





ECO

50988

Wooden puzzle

Puzzle skill game made of wood, carefully fit the 6 blocks in the holder together. We will print your logo on the holder.

✂ 5,3 × 5,3 × 9 cm | 田 DC1 4 × 1,8 | 田 K



ECO

50742

Stacking game

Skills game made of wood. Take the individual blocks out of the built-up tower and put them on top avoiding it collapses. We will print your logo on a label on the box.

✂ 5,7 × 5,7 × 17 cm | 田 ETN1 4 × 2 | 田 K



ECO

50566

Classic ludo game made of wood

Classic ludo game made of wood. The game figures are for plugging in, which also ensures play fun on the road. Your advertising will be printed on the board.

✂ 12 × 12 × 1,1 cm | 田 T3 3 × 1 | 田 K



ECO

50425

Wooden cobra game

Building a dice can be complicated - but relax - think before completing it - or just try. Your advertising will be printed on the cotton bag.

✂ 4,5 × 4,5 × 4,5 cm | 田 TT1 3 × 3 | 田 B





ECO

52346**Mikado and Domino Game**

Mikado and Domino Game made from wood with different colors packed in a sustainable wood box. Your Logo will be printed onto the box.

✂ 19,6 x 9,1 x 2,9 cm | 📐 T3 5 x 2 | 🌳 KS



ECO

50980**Mikado game in wood**

Mikado game packed in a wooden box, perfect for training your mental ability. We will print your advertisement on the box.

✂ 19 x 4,2 x 2,1 cm | 📐 T2 3 x 2 | 🌳 SF



ECO

21558**Writing set with ruler, eraser, sharpener, pencil and roller ball**

Writing set including ruler, eraser, sharpener, pencil and a roller ball, in an environmentally friendly cotton pouch. We print your logo on the pouch.

✂ 18,3 x 7,8 x 1,6 cm | 📐 TT1 10 x 4 | 🌳 N



ECO

50979**Dominos game in wood**

Classic domino game in a wooden box, ideal fun on the road. Your advertisement will be printed on the box.

✂ 14,5 x 4,9 x 2,8 cm | 📐 T2 5 x 2 | 🌳 N





45188

Telescope collapsible umbrella

Manually operated telescope collapsible umbrella with protective cover. We will print your logo on one segment. Full-color print on request.

☒ ø 85 x (33 - 55) cm | ☒ S2 15 x 10 | ☒ P



☒ STORM-SAFE ☒ AUTOMATIC OPEN/CLOSE

40747

Umbrella

Storm-safe automatic umbrella with soft grip, made of pongee. We will print your logo on one segment.

☒ ø 103 x 64 cm | ☒ S2 20 x 10 | ☒ P



☒ STORM-SAFE ☒ UV400

40748

Umbrella with silver inside

Manual-opening umbrella made of pongee, silver-colored inside and soft grip. We will print your logo on one segment.

☒ ø 105 x 70 cm | ☒ S2 20 x 10 | ☒ P





Bluetooth® **AUTOMATIC OPEN**

40941

Automatic pocket umbrella

High-quality automatic pocket umbrella made of pongee, with soft grip and integrated Bluetooth speaker. Your advertisement will be printed on a segment.

☒ Ø 105 x 64 cm | ☒ S2 15 x 10 | ☒ P



AUTOMATIC OPEN/CLOSE

45193

Umbrella, with pushbutton

Automatic collapsible umbrella - opens and closes with push button. We will print your logo on one segment. Full-color print on request.

☒ Ø 98 x (29,5-57) cm | ☒ S2 15 x 10 | ☒ N



AUTOMATIC OPEN/CLOSE

43518

Pocket umbrella

Pocket umbrella with colored border – made of 190T pongee and fiberglass. We will print your logo on one segment. Full-color print on request.

☒ Ø 100 x 60 cm | ☒ S2 15 x 10 | ☒ P



Ferraghini® **AUTOMATIC OPEN/CLOSE**

f225

Ferraghini pocket umbrella

Design automatic pocket umbrella with protective cover. We will print your logo on one segment. Full-color print on request.

☒ Ø 100 x 60 cm | ☒ S2 15 x 10 | ☒ P





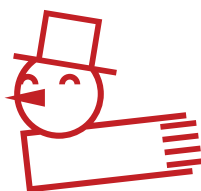
AUTOMATIC OPEN

43298

Umbrella made of pongee, automatic

Elegant automatic umbrella made of pongee with comfortable soft grip. The seam and the lower part of the grip are accentuated in trendy colors. We will print your logo on a segment. Full-color print on request.

☒ Ø 105 x 83 cm | ☒ S2 20 x 10 | ☒ P



UV400 AUTOMATIC OPEN

45202

Umbrella with UV protection

Lightweight (only 340 gram) high-quality automatic umbrella with UV protection. We will print your logo on a segment. Full-color print on request.

☒ Ø 100 x 85 cm | ☒ S2 20 x 15 | ☒ N

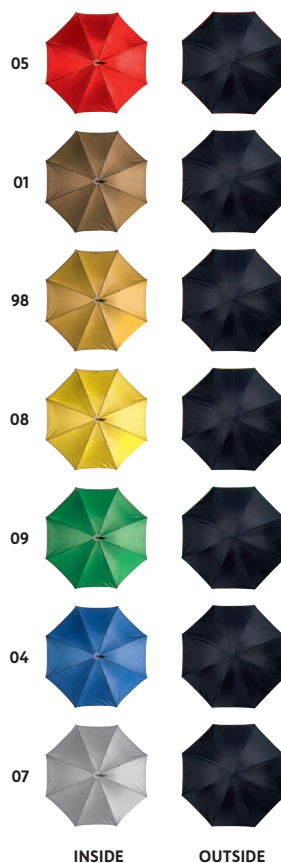


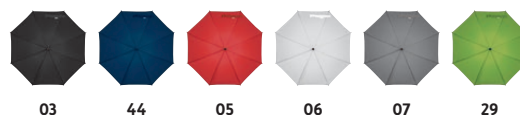
45197

Umbrella with double cover

Luxurious umbrella with double cover, black exterior and colored inside. High-quality manufactured results in a long lasting umbrella. We will print your logo on one segment. Full-color print on request.

☒ Ø 102 x 88 cm | ☒ S2 20 x 15 | ☒ P





42436

Automatic Umbrella

Automatic, windproof Umbrella with fiberglass shaft, conopy made of recyceled PET bottles and curved wooden handle. Your Logo will be printed on one segment.

☒ ø 105 x 88 cm | ☒ S2 20 x 15 | ☒ N



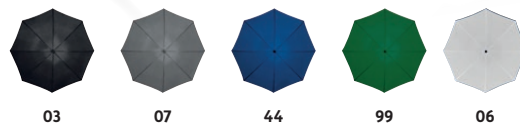
AUTOMATIC OPEN

43453

Umbrella with aluminum shaft

Umbrella with aluminum shaft made of pongee. We will print your logo on one segment. Full-color print on request.

☒ ø 105 x 86 cm | ☒ S2 20 x 10 | ☒ N



STORM-SAFE

45187

Large umbrella with soft grip.

Large umbrella with comfortable soft grip, plastic tops, bar in carbon appearance and storm-safe bending technique. We will print your logo on one segment. Full-color print on request.

☒ ø 123 x 100,5 cm | ☒ S2 25 x 20 | ☒ N





AUTOMATIC OPEN

41391

Hands-free umbrella

Pongee umbrella with comfortable handle that can be hung on the wrist. We will print your logo on a segment.

☒ Ø 103 x 88 cm | ☒ S2 20 x 15 | ☒ N



03



08



04



09



05



10



06



44



07



04



24



29



10



05



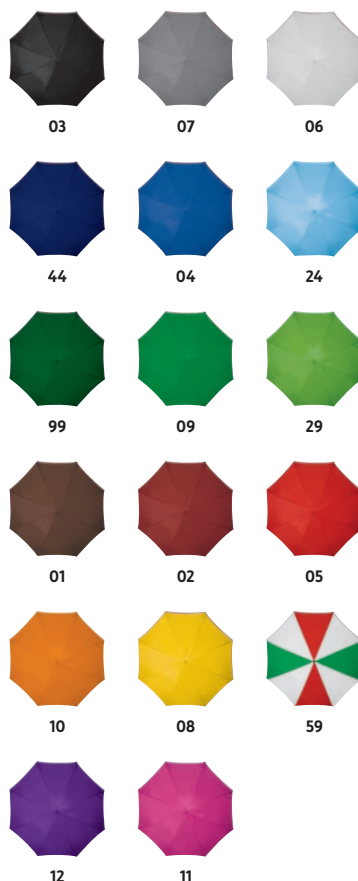
40476

Reverse umbrella - double layer - 190T pongee

This umbrella is different, that is for sure, and so will be your promotion, it is also easier to get into your car on a rainy day! We will print your logo on one segment. Full-color print on request.

☒ Ø 120 x 88 cm | ☒ S2 20 x 15 | ☒ P





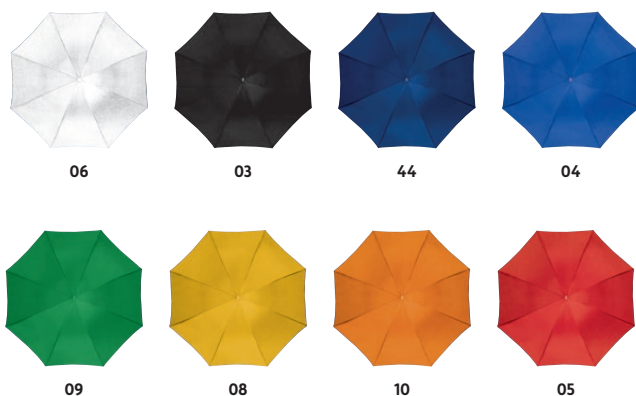
AUTOMATIC OPEN

45131

Automatic umbrella

Automatic umbrella with curved wooden handle and wooden tip. We will print your logo on one segment. Full-color print on request.

☒ ø 105 x 88 cm | ☒ Sz 20 x 15 | ☒ P



AUTOMATIC OPEN

45086

Automatic walking-stick umbrella

Bicolored automatic walking-stick umbrella with wooden handle and metal tops. We will print your logo on one segment. Full-color print on request.

☒ ø 100 x 83 cm | ☒ Sz 20 x 15 | ☒ P





42476

Kids Umbrella

Funny Umbrella for kids in different 3D animal styles made from polyester. For the kids safety with rounded tips and easy opening. Your Logo will be printed on one segment.

☒ 70 x 58,5 cm | ☒ S2 12 x 8 | ☒ N



⚡ AUTOMATIC OPEN

42416

Automatic Umbrella

Automatic, Polyester Umbrella with Aluminium Shaft and softtouch Handle. Your Logo will be printed on one segment.

☒ 89 x 89 x 83 cm | ☒ S2 20 x 15 cm | ☒ N



04



05



07



08



09



42386

Heartshape Umbrella

Umbrella in Heartshape made from Polyester with Aluminium Shaft and curved, rubberised Handle. Perfect for Weddings, Valentines Day or other Lovely Days. Your Logo will be printed on one segment.

☒ 103 x 101 x 86 cm | ☒ S2 10 x 10 | ☒ N





UMBRELLAS



PHTHALATE FREE

40729

Rain poncho

Rain poncho made from EVA, packed in a practical carrying bag. We will print your logo on the bag.

XL | L3 4 x 4 | P

ECO PLA

41882

Compostable Rain Poncho

Phthalate-free, compostable Rain Poncho made from PLA with carrier bag. This poncho is a sustainable alternative. Your Logo will be printed onto the bag.

one size | ETN1 5 x 5 | P



PHTHALATE FREE

49218

Rain poncho in plastic cover

Disposable rain poncho in plastic cover. We will print your advertising on a paper inlay in the single packaging.

XL | ETN2 9 x 13 | P

PHTHALATE FREE

42323

Rainponcho with portable can

Phthalate-Free, transparent Rainponcho inside a small can with carabiner to attach. Perfect for being on the move. Your Logo will be printed onto the can.

ø 5,4 x 5 cm | T4 ø 3 | P





RFID PROTECTION GENUINE LEATHER

91385

RFID Card case

Leather credit card case with RFID protection, for up to 4 cards. Your logo is printed on the case.

7,2 x 0,5 x 9,8 cm | T3 3 x 1,5 | KS



RFID PROTECTION GENUINE LEATHER

91186

Leather RFID credit card case

Genuine leather RFID credit card holder with space for 3 credit cards on each side and a coin pocket. The case protects your most important cards. Your advertisement will be printed on the case.

10,5 x 7,5 x 0,5 cm | L3 6 x 2 | KS



92576

PVC document cover

Transparent, flexible PVC cover for travel, vaccination or other documents. Protects against dirt and wear. Your advertising will be printed on the outside of the cover.

9,9 x 0,2 x 13,8 cm | T2 4 x 3 | N



GENUINE LEATHER

91384

Key case

Premium case for car keys, made of high-quality leather. Your advertising is printed on the case.

6,3 x 1 x 10,8 cm | T3 3,5 x 1,5 | KS





90268

Ice scraper glove

Black polyester and fleece ice scraper glove to protect your hands against cold weather conditions. We will print your logo on the plastic scraper.

❏ 38 x 16 x 2,4 cm | ☒ TT1 7 x 5 | ☐ N

99011

Parking disc with ice scraper

Parking disc with ice scraper and squeegee. We will print your logo on the white surface at the back.

❏ 11,9 x 15,6 x 0,7 cm | ☒ T4 10 x 7 | ☐ P



04



66



05



10



99012

Ice scraper transparently frosted

Ice scraper transparently frosted. We will print your logo on the scraper.

❏ 22,2 x 10,8 x 2,9 cm | ☒ T3 5 x 3 | ☐ N

90891

Plastic ice scraper with brush

Ergonomic plastic scraper with removable scraper and brush for better cleaning of the windshield. Your advertisement will be printed on the brush.

❏ 40,5 x 10 x 7,5 cm | ☒ T3 4 x 2 | ☐ P





07



05



03



⚡ EXPRESS

81816

Multitool with Keyring

Metal Multitool with Keyring, LED-Light, Flat- and Screwdriver, Bottle Opener and Knife. Your Logo will be engraved onto the black surface.

✂ 9 x 2,9 x 1,5 cm | 📏 L2 4 x 0,8 | 🏠 K



⚡ EXPRESS

INCL. 2 BUTTON CELLS

80927

Flashlight with silicone band

Flashlight with metal body, 6 LEDs, and silicone loop. Your logo will be engraved.

✂ 4,9 x Ø 2,5 cm | 📏 L2 2,5 x 1,5 | 🏠 K



⚡ EXPRESS

INCL. 4 BUTTON CELLS

97799

Screwdriver set with LED

This nice gift set consists of a keyring 3 LEDs torch, and a metal screwdriver with unscrewing cap. Features 8 interchangeable bits in different sizes. We will engrave your logo on the shaft of the screwdriver.

✂ 15 x 7,9 x 2,5 cm | 📏 L2 3 x 0,8 | 🏠 K



⚡ EXPRESS

INCL. 3 UM4 BATTERIES

88757

Torch with 3 batteries in a box

Very bright torch made of aluminum, with 9 LEDs and practical hand lug, supplied inclusive batteries in a box*. Your logo will be laser-engraved on the smooth center area.

✂ 8,6 x Ø 2,5 cm | 📏 L2 2,5 x 1 | 🏠 K





⚡ EXPRESS

INCL. 3 UM4 BATTERIES

81185

LED flashlight with 3 different light functions

LED flashlight made of aluminum with 3 different light functions (still, SOS and flashing light), a power of 10 watts and a wrist strap. Your advertising will be engraved on the flashlight.

✂ 3,6 x 13,6 cm | ☒ L2 3,5 x 1,5 | ☐ K

⚡ EXPRESS

INCL. 3 UM4 BATTERIES

88422

Torch with 14 LEDs in a box

This massive metal torch with 14 LEDs and extra-bright light is comfortable to hold thanks to the chequered knob. Your logo will be engraved on the square on the grip.

✂ 12,3 x 3,5 cm | ☒ L2 3 x 1 | ☐ K



⚡ EXPRESS

INCL. 2 BUTTON CELLS

90817

Multi-tool knife

Multitool made of metal with the following functions: LED light, emergency hammer, belt cutter, screwdrivers, knife, bottle opener, saw and wrench, packed in a case. Your logo will be laser engraved.

✂ 15,1 x 5,6 x 2,3 cm | ☒ L2 3 x 1 | ☐ P

⚡ EXPRESS

INCL. 4 BUTTON CELLS

80387

Magnetic flexible telescope torch

Magnetic flexible telescope torch with 3 LED, the head is flexible and magnetic, perfect for getting metal things out of the tightest places. Telescope approx. 60 cm. We will laser engrave your logo onto the rectangle on the handle.

✂ 17,2 x 2,1 cm | ☒ L2 4 x 0,5 | ☐ K





91183

Headlamp

COB head light with adjustable rubber band and 3 watts power. The lamp has a still, flashing, and dimmable light function. Your advertisement will be printed on the front of the lamp.

✂ adjustable | ☒ T3 3 x 0,5 | ☐ K



90703

Camping light

Plastic camping light with LED and adjustable brightness. Perfect to be placed on a table, or hanged on your tent pole. Your logo will be printed on the lamp.

✂ ø 9 x 19,5 cm | ☒ T4 2 x 2 | ☐ K



81374

COB light

Handy COB working light made of plastic with additional lamp on the side, safe stand and carrying handle. We print your advertising on the back.

✂ 9,5 x 3,5 x 13 cm | ☒ T4 4 x 3 | ☐ K



91173

COB lamp

COB construction or work lamp made of plastic with 10 watts of power, 3 lighting functions (floor, SOS and flashing) and a fold-out handle for putting down or carrying. Your ad will be printed above the light.

✂ 13,7 x 4 x 10,2 cm | ☒ T3 4 x 1 | ☐ K





ECO ⚡ EXPRESS

51899

11-Parts Stainless Steel Pocket Knife

11-Parts Stainless Steel Pocket Knife with 2 Saws, Scissors, Bottle- and Can Opener, Corkscrew, Rasp, Screwdriver et cetera. and wooden coating. Your Logo will be engraved onto the wooden coating.

✂ 9,2 × 2,3 × 1,8 cm | 📏 L3 4 × 1 | 🌳 K



ECO ⚡ EXPRESS

81419

Multifunction tool, stainless steel

High-quality stainless steel multi-tool with wooden grip in a black case. We will engrave your logo onto one handle.

✂ 7,8 × 2,7 × 16,5 cm | 📏 L3 1,5 × 0,5 | 🌳 E



81943

Toolset in Cardboard Box

Toolset consisting of a Multitool with forceps, Knife, Rasp, 2 Saws, Slotted- and Screwdriver, Bottle- and Can Opener and a Metal Keyring with LED-Light, Flat- and Screwdriver, Bottle Opener and Knife. Your Logo will be printed onto the cardboard box.

✂ 12,9 × 20 × 2,9 cm | 📏 T2 4,5 × 1,2 | 🌳 K



⚡ EXPRESS

83062

Set of torch and multiple pincers

Set of large metal torch with 14 LEDs and multi-tool with pincers, saw, can opener, nail file, large and small slotted screwdriver, Phillips screwdriver, extra sharp knife, and fish scaler with measuring unit. We will engrave your advertising on the smooth surface of the torch grip and the grip of the multi-tool.

✂ 17,1 × 13 × 3,8 | 📏 L2 3 × 0,5 | 🌳 K





⚡ EXPRESS

87823

Tool box aluminium

For the road or at home, this 25-piece aluminium tool box* with zipper contains 2 pliers, bits and screwdrivers in various sizes and tweezers. We will engrave your logo on the case.

✂ 20 × 13,5 × 3 cm | ☒ L3 4 × 2 | ☐ N

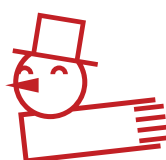
⚡ EXPRESS

88002

25-piece tool case

Foldable 25-piece tool case, hard shell. We will engrave your logo on the center of the case.

✂ 15,5 × 10 × 5 cm | ☒ L3 4 × 2 | ☐ KS



CrisMa®

81735

5 meter steel measuring tape

Large 5 meter steel measuring tape with robust plastic and metal coating, large figures and a permanent stop bar. The practical belt clip and the small cord provide a safe grip. We will print your logo on the side.

✂ 8,5 × 3,7 × 6,6 cm | ☒ T3 2,5 × 1,8 | ☐ K

CrisMa®

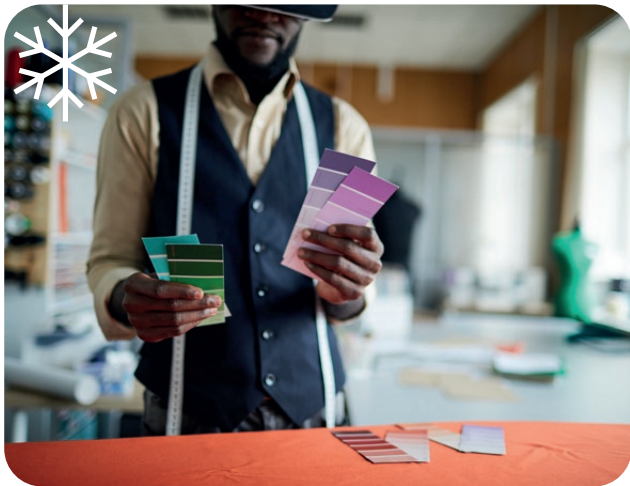
81734

3 meter steel measuring tape

Large 3 meter steel measuring tape with robust plastic and metal coating, large figures, and a permanent stop bar. The practical belt clip and the small cord provide a safe grip. We will print your logo on the side.

✂ 7,5 × 3,3 × 5,9 cm | ☒ T3 2,5 × 1,5 | ☐ K



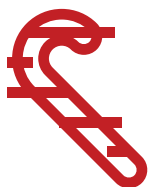


82299

Rubberised 1,50 m Measuring Tape

Rubberised 1,50 m Measuring Tape with paper sleeve. Your Logo will be printed onto the blank surface.

✂ 9 x 1,3 x 1,3 cm | ☒ T2 5 x 1 | ☐ KS



88809

2 meter steel measuring tape

Flexible steel 2 meters measuring tape, with spirit level, memo pad, and pen. We will print your logo on the transparent lid.

✂ 8 x 3,2 x 6,2 cm | ☒ T3 3,5 x 3,5 | ☐ K



80895

2m yardstick

Metric folding ruler made of plastic, 2 meters length (in cm.) Your advertisement will be printed directly on the ruler.

✂ 23 x 3 x 1,5 cm | ☒ DC1 6 x 2 | ☐ N





⚡ EXPRESS

90367

Keychain with shopping coin and bottle opener
Metal keychain with shopping coin and bottle opener. Your logo will be laser engraved onto the body.

✂ 9,7 × 2,3 × 0,5 cm | ☒ L2 1,5 × 1 | ☐ KS



⚡ EXPRESS

92260

Metal keyring with bottle opener
Metal keyring with bottle opener, glossy chrome. Your logo will be engraved.

✂ 8,2 × 3,2 × 0,8 cm | ☒ L2 3 × 1,5 | ☐ K

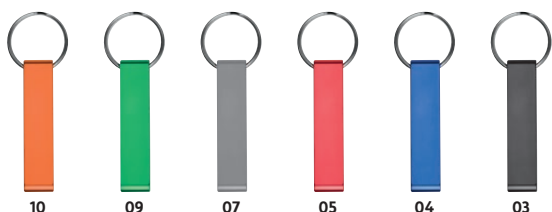


⚡ EXPRESS

91583

Keyring with shopping cart chip
Metal keyring with integrated shopping cart chip. Your logo will be engraved.

✂ 6 × 2,3 × 0,2 cm | ☒ L2 4 × 1 | ☐ KS



⚡ EXPRESS

82325

Metal Keyring with Bottle- and Canopener
Metal Keyring with Bottle- and Canopener, which you can use also as a mobile phone stand. Your Logo will be engraved onto the Keyring.

✂ 7,5 × 2,5 × 1,5 cm | ☒ L1 4 × 0,8 | ☐ P



⚡ EXPRESS

97885

Keyring with a black PU strap
Keyring with a black PU strap and a shiny metal plate. We will engrave your logo on the plate.

✂ 8,8 × 2,1 × 1 cm | ☒ L2 1,7 × 1,4 | ☐ KS





ECO EXPRESS

91396

Keyring with wooden stick

Metal keyring with wooden piece. Your logo will be engraved on the wooden stick.

✂ 8,4 × 2,4 × 0,5 cm | ☒ L2 2,5 × 1,5 | ☐ KS



EXPRESS

92108

Metal keyring

Top seller - classic gift keyring perfect for engraving your logo.

✂ 8 × 3,5 × 0,6 cm | ☒ L2 2,7 × 0,9 | ☐ KS



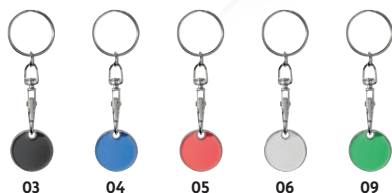
EXPRESS

92273

Metal keyring, rectangular

Metal keyring in rectangular design. Your logo will be engraved.

✂ 7,7 × 2,3 × 0,3 cm | ☒ L2 3,5 × 1,5 | ☐ KS



EXPRESS

90477

Keyring with shopping coin

Metal keyring with snap hook and shopping coin. We will engrave your logo on the silver side of the coin.

✂ 2,5 × 8,3 cm | ☒ L2 1 × 1 | ☐ P



EXPRESS

92211

Metal keyring

Metal keyring, round, chrome with shiny inner part. Your logo will be engraved.

✂ 7 × 3,5 × 0,3 cm | ☒ L2 2 | ☐ KS



EXPRESS

97882

Metal keyring with shopping chip

High-gloss finished metal keyring containing a practical shopping cart chip. Your logo will be engraved.

✂ 7,6 × 3,5 × 0,6 cm | ☒ L2 1 × 1,5 | ☐ K





⚡ EXPRESS

90044

Table lighter

Metal table lighter, ideal for lighting candles, chimneys and stoves. Refillable and with regulable flame size. We will print your logo on the lighter.

✂ 23 × 3,5 × 1,9 cm | ☒ L2 5 × 1,5 | 田 K

⚡ EXPRESS

86016

Slim long metal electronic lighter

Classic elegant slim metal table lighter. We will engrave your logo centered on the lighter.

✂ 17,6 × 1,5 × 1,1 cm | ☒ L2 4,5 × 1 | 田 K



90045

Creme Brulee torch

Refillable "creme brulee" torch with regulable flame size and kids safety. We will print your logo onto the shaft.

✂ 6 × 3,5 × 11,2 cm | ☒ T3 5 × 1,2 | 田 K





90977

USB lighter

Plastic lighter, charged through a USB cable, and lights without flame. We will print your logo on the lighter.

✂ 7,9 × 2,7 × 1,6 cm | ☒ T2 3,5 × 2 | ☐ N



97



03



04



05



90976

Matt USB lighter

Matt lighter made of plastic, it is charged through a USB cable, and lights without flame. We will print your logo on the lighter.

✂ 3,9 × 1,6 × 7 cm | ☒ T2 2,5 × 3 | ☐ K



⚡ EXPRESS

98741

Lighter "Gold bar"

Who does not want to get a gold bar? Smart automatic lighter in small gold bar shape. Refillable and single-packed in a black box* with transparent window. We will engrave your logo on the back of the lighter.

✂ 7 × 3,2 × 1,6 cm | ☒ L3 4 × 1,5 | ☐ K



91393

Thick lighter

Refillable electronic lighter with adjustable flame. Your advertising will be printed on one side.

✂ 3,4 × 1 × 6 cm | ☒ T2 3 × 2,5 | ☐ N





03



06

91392

Slim lighter

Refillable electronic lighter with black head and adjustable jet flame. Your advertising will be printed on one side.

❧ 2,5 x 1,2 x 7,9 cm | ☒ T2 5 x 1,5 | ☐ N



06



08



29



07



05



24



03



12



44

CrisMa®

93777

Lighter

Electronic lighter in fresh colors, refillable. The flame can be adjusted continuously. The advertising will be digitally printed (multi-colored) so that it is legible for right-handers.

❧ 2,5 x 1,5 x 8,3cm | ☒ DCo 6 x 1,8 | ☐ N





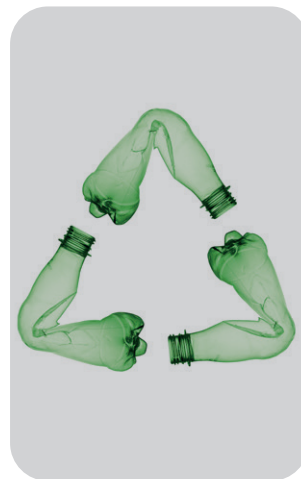
Original Text

12557

RPET pen

Environmentally friendly, transparent ballpoint pen made of RPET with a large blue refill, curved clip, slightly offset grip zone and RPET logo. Your logo will be printed to the right of the clip.

✂ 14,8 x ø 1,1 cm | 📐 T1 4 x ø 0,5 | 🏠 P



Text Definition

10067

Item number

✂ 14,5 x ø 1 cm | 📐 L1 5 x ø 0,6 | 🏠 P

✂ : Item size

📐 : Print group, Print size

🏠 : Packing

Packings : **K**= Box, **P**= Polybag, **NWP**= Non woven pouch, **VP**= Velour pouch, **N**= not single packed



